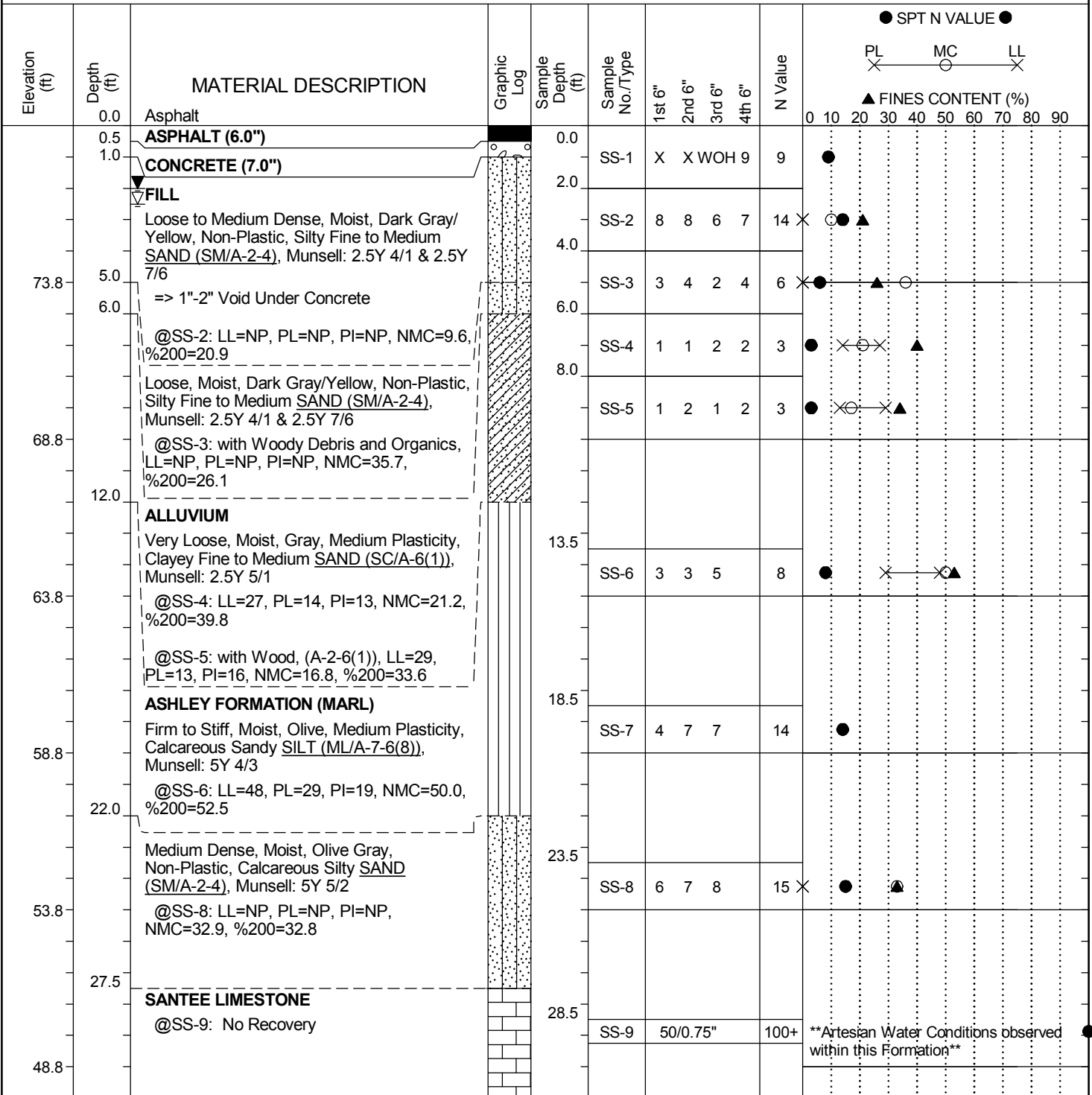


# SCDOT Soil Test Log

<b>Project ID:</b> P037127	<b>County:</b> Dorchester	<b>Boring No.:</b> B-1
<b>Site Description:</b> US 15 Bridge Replacement over Indian Field Swamp		<b>Route:</b> US 15
<b>Eng./Geo.:</b> R. Wessinger	<b>Boring Location:</b> 90+58	<b>Offset:</b> 8'-RT
<b>Alignment:</b> Existing CL	<b>Elev.:</b> 78.8 ft	<b>Latitude:</b> 33.23173
<b>Longitude:</b> -80.53894	<b>Date Started:</b> 9/25/2019	
<b>Total Depth:</b> 100 ft	<b>Soil Depth:</b> 100 ft	<b>Core Depth:</b> 0 ft
<b>Date Completed:</b> 9/25/2019	<b>Bore Hole Diameter (in):</b> 4	<b>Sampler Configuration</b>
<b>Liner Required:</b> Y (N)	<b>Liner Used:</b> Y (N)	
<b>Drill Machine:</b> CME 45B	<b>Drill Method:</b> RW	<b>Hammer Type:</b> Automatic
<b>Energy Ratio:</b> 92%	<b>Core Size:</b> N/A	<b>Driller:</b> L. Guempel
<b>Groundwater:</b> TOB	<b>2.5 ft</b>	<b>24HR</b> 2 ft



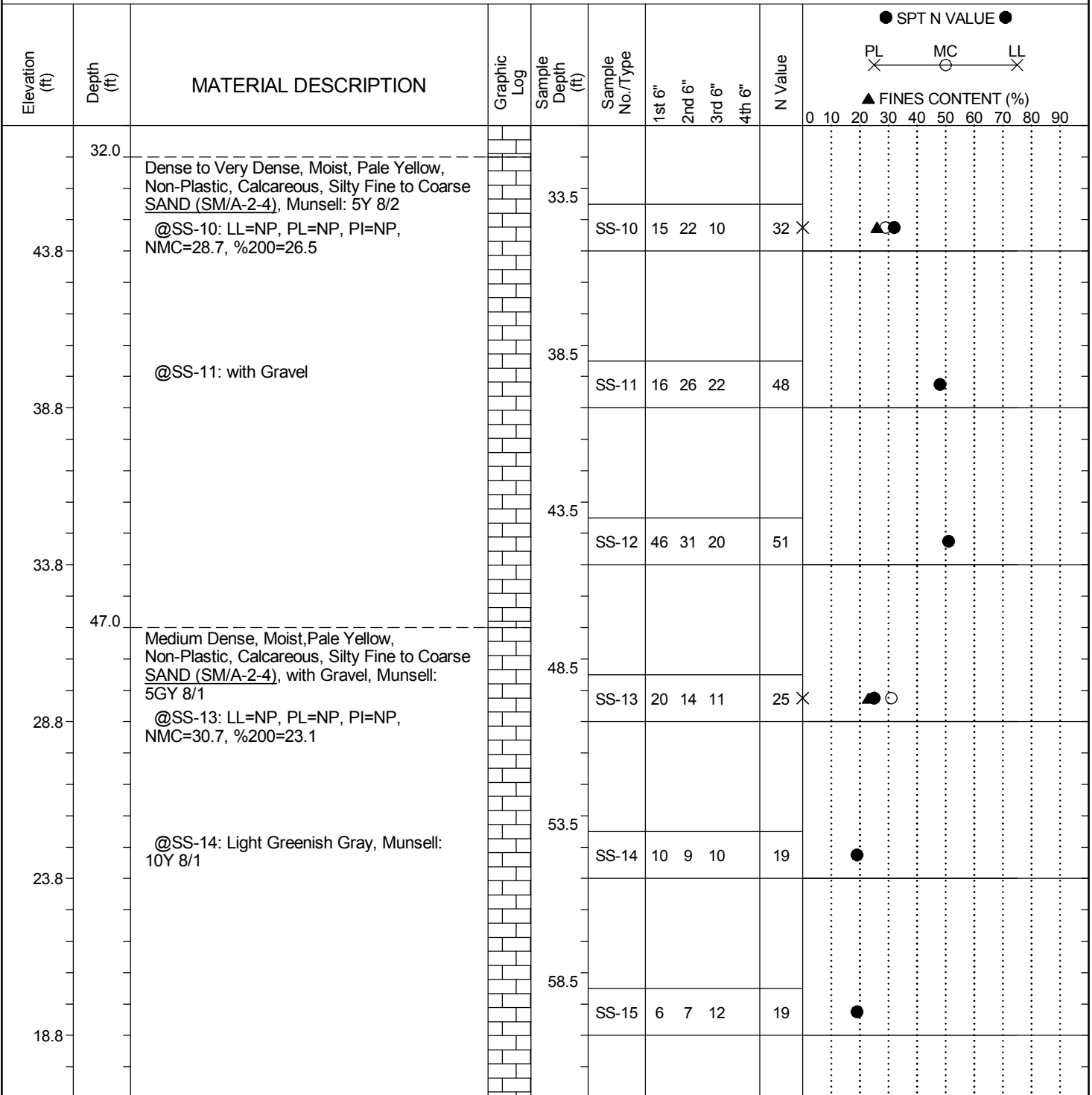
## LEGEND

Continued Next Page

SAMPLER TYPE		DRILLING METHOD	
SS - Split Spoon	NQ - Rock Core, 1-7/8"	HSA - Hollow Stem Auger	RW - Rotary Wash
UD - Undisturbed Sample	CU - Cuttings	CFA - Continuous Flight Augers	RC - Rock Core
AWG - Rock Core, 1-1/8"	CT - Continuous Tube	DC - Driving Casing	

# SCDOT Soil Test Log

<b>Project ID:</b> P037127	<b>County:</b> Dorchester	<b>Boring No.:</b> B-1
<b>Site Description:</b> US 15 Bridge Replacement over Indian Field Swamp		<b>Route:</b> US 15
<b>Eng./Geo.:</b> R. Wessinger	<b>Boring Location:</b> 90+58	<b>Offset:</b> 8'-RT
<b>Alignment:</b> Existing CL	<b>Date Started:</b> 9/25/2019	
<b>Elev.:</b> 78.8 ft	<b>Latitude:</b> 33.23173	<b>Longitude:</b> -80.53894
<b>Total Depth:</b> 100 ft	<b>Soil Depth:</b> 100 ft	<b>Core Depth:</b> 0 ft
<b>Date Completed:</b> 9/25/2019		
<b>Bore Hole Diameter (in):</b> 4	<b>Sampler Configuration</b>	<b>Liner Required:</b> Y (N)
<b>Liner Used:</b> Y (N)	<b>Drill Machine:</b> CME 45B	<b>Drill Method:</b> RW
<b>Hammer Type:</b> Automatic	<b>Energy Ratio:</b> 92%	
<b>Core Size:</b> N/A	<b>Driller:</b> L. Guempel	<b>Groundwater:</b> TOB 2.5 ft
<b>24HR:</b> 2 ft		



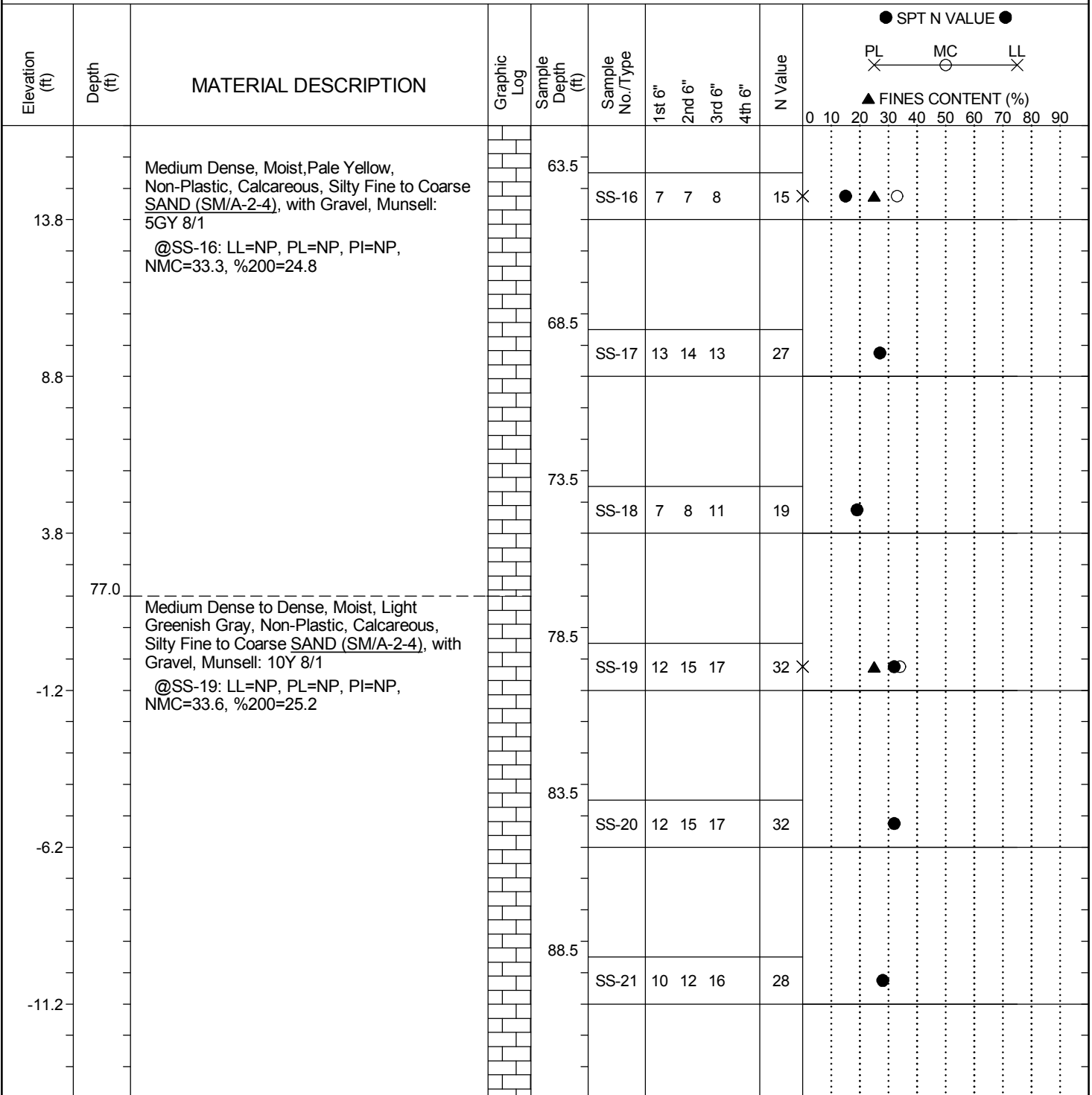
## LEGEND

Continued Next Page

SAMPLER TYPE		DRILLING METHOD	
SS - Split Spoon	NQ - Rock Core, 1-7/8"	HSA - Hollow Stem Auger	RW - Rotary Wash
UD - Undisturbed Sample	CU - Cuttings	CFA - Continuous Flight Augers	RC - Rock Core
AWG - Rock Core, 1-1/8"	CT - Continuous Tube	DC - Driving Casing	

# SCDOT Soil Test Log

<b>Project ID:</b> P037127	<b>County:</b> Dorchester	<b>Boring No.:</b> B-1
<b>Site Description:</b> US 15 Bridge Replacement over Indian Field Swamp		<b>Route:</b> US 15
<b>Eng./Geo.:</b> R. Wessinger	<b>Boring Location:</b> 90+58	<b>Offset:</b> 8'-RT
<b>Alignment:</b> Existing CL	<b>Date Started:</b> 9/25/2019	
<b>Elev.:</b> 78.8 ft	<b>Latitude:</b> 33.23173	<b>Longitude:</b> -80.53894
<b>Total Depth:</b> 100 ft	<b>Soil Depth:</b> 100 ft	<b>Core Depth:</b> 0 ft
<b>Date Completed:</b> 9/25/2019		
<b>Bore Hole Diameter (in):</b> 4	<b>Sampler Configuration</b>	<b>Liner Required:</b> Y (N)
<b>Liner Used:</b> Y (N)		
<b>Drill Machine:</b> CME 45B	<b>Drill Method:</b> RW	<b>Hammer Type:</b> Automatic
<b>Energy Ratio:</b> 92%		
<b>Core Size:</b> N/A	<b>Driller:</b> L. Guempel	<b>Groundwater:</b> TOB 2.5 ft
<b>24HR:</b> 2 ft		



### LEGEND

Continued Next Page

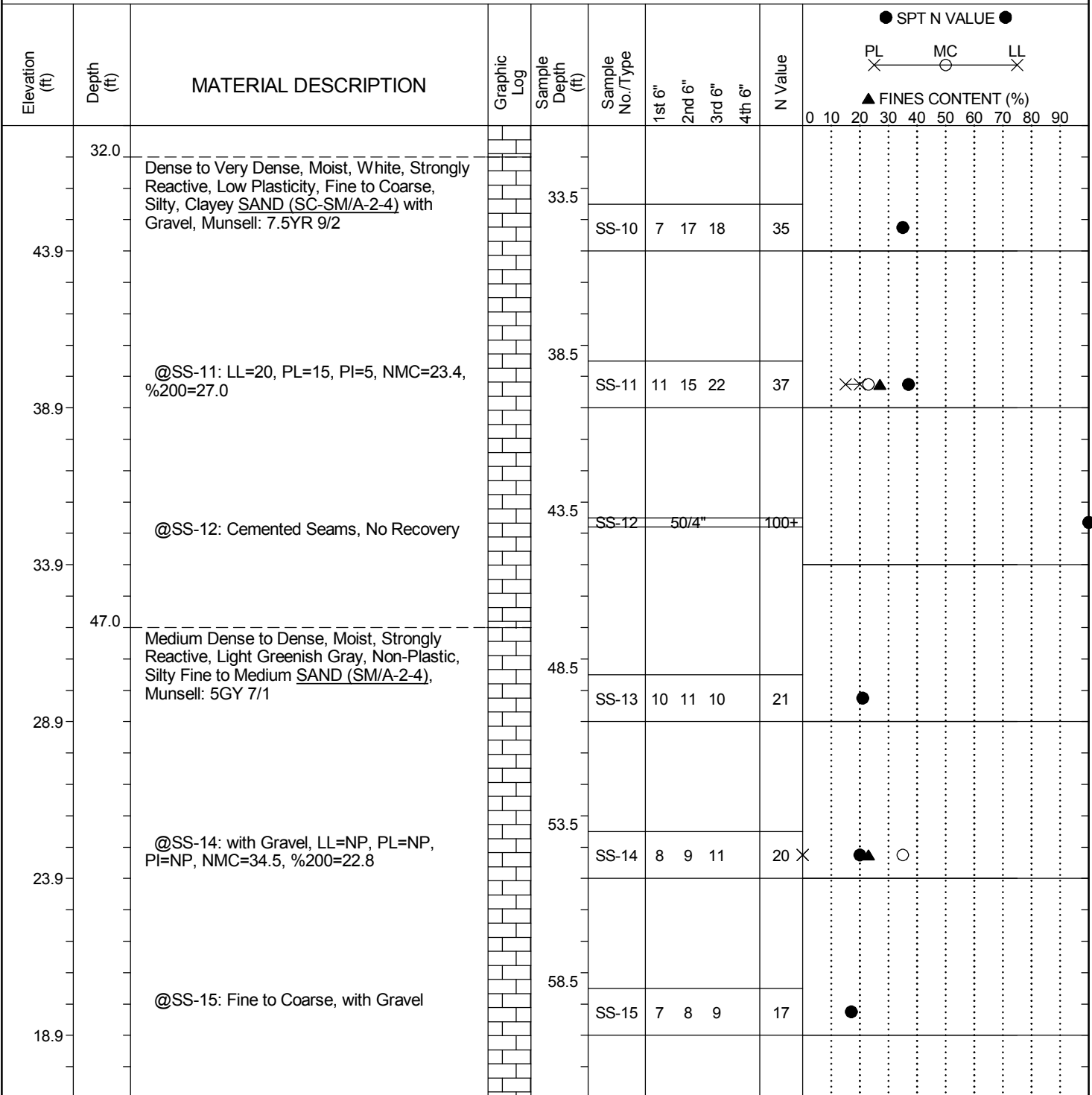
SAMPLER TYPE		DRILLING METHOD	
SS - Split Spoon	NQ - Rock Core, 1-7/8"	HSA - Hollow Stem Auger	RW - Rotary Wash
UD - Undisturbed Sample	CU - Cuttings	CFA - Continuous Flight Augers	RC - Rock Core
AWG - Rock Core, 1-1/8"	CT - Continuous Tube	DC - Driving Casing	





# SCDOT Soil Test Log

<b>Project ID:</b> P037127	<b>County:</b> Dorchester	<b>Boring No.:</b> B-2
<b>Site Description:</b> US 15 Bridge Replacement over Indian Field Swamp		<b>Route:</b> US 15
<b>Eng./Geo.:</b> R. Wessinger	<b>Boring Location:</b> 91+29	<b>Offset:</b> 8'-LT
<b>Alignment:</b> Existing CL	<b>Date Started:</b> 9/26/2019	
<b>Elev.:</b> 78.9 ft	<b>Latitude:</b> 33.231532	<b>Longitude:</b> -80.538971
<b>Total Depth:</b> 100 ft	<b>Soil Depth:</b> 100 ft	<b>Core Depth:</b> 0 ft
<b>Date Completed:</b> 9/26/2019		
<b>Bore Hole Diameter (in):</b> 4	<b>Sampler Configuration</b>	<b>Liner Required:</b> Y (N)
<b>Liner Used:</b> Y (N)	<b>Drill Machine:</b> CME 45B	<b>Drill Method:</b> RW
<b>Hammer Type:</b> Automatic	<b>Energy Ratio:</b> 92%	
<b>Core Size:</b> N/A	<b>Driller:</b> L. Guempel	<b>Groundwater:</b> TOB 2.5 ft
<b>24HR:</b> 2 ft		



## LEGEND

Continued Next Page

SAMPLER TYPE		DRILLING METHOD	
SS - Split Spoon	NQ - Rock Core, 1-7/8"	HSA - Hollow Stem Auger	RW - Rotary Wash
UD - Undisturbed Sample	CU - Cuttings	CFA - Continuous Flight Augers	RC - Rock Core
AWG - Rock Core, 1-1/8"	CT - Continuous Tube	DC - Driving Casing	

# SCDOT Soil Test Log

<b>Project ID:</b> P037127	<b>County:</b> Dorchester	<b>Boring No.:</b> B-2
<b>Site Description:</b> US 15 Bridge Replacement over Indian Field Swamp		<b>Route:</b> US 15
<b>Eng./Geo.:</b> R. Wessinger	<b>Boring Location:</b> 91+29	<b>Offset:</b> 8'-LT
<b>Alignment:</b> Existing CL	<b>Date Started:</b> 9/26/2019	<b>Date Completed:</b> 9/26/2019
<b>Elev.:</b> 78.9 ft	<b>Latitude:</b> 33.231532	<b>Longitude:</b> -80.538971
<b>Total Depth:</b> 100 ft	<b>Soil Depth:</b> 100 ft	<b>Core Depth:</b> 0 ft
<b>Bore Hole Diameter (in):</b> 4	<b>Sampler Configuration</b>	<b>Liner Required:</b> Y (N)
<b>Liner Used:</b> Y (N)	<b>Drill Machine:</b> CME 45B	<b>Drill Method:</b> RW
<b>Hammer Type:</b> Automatic	<b>Energy Ratio:</b> 92%	<b>Core Size:</b> N/A
<b>Driller:</b> L. Guempel	<b>Groundwater:</b> TOB 2.5 ft	<b>24HR:</b> 2 ft

Elevation (ft)	Depth (ft)	MATERIAL DESCRIPTION	Graphic Log	Sample Depth (ft)	Sample No./Type	SPT N VALUE				FINES CONTENT (%)			
						1st 6"	2nd 6"	3rd 6"	4th 6"	N Value	PL	MC	LL
13.9		Medium Dense to Dense, Moist, Strongly Reactive, Light Greenish Gray, Non-Plastic, Silty Fine to Medium SAND (SM/A-2-4), Munsell: 5GY 7/1		63.5	SS-16	8	11	13		24			
8.9		@SS-17: LL=NP, PL=NP, PI=NP, NMC=32.6, %200=27.5		68.5	SS-17	8	9	14		23	X		
3.9				73.5	SS-18	11	14	19		33			
-1.1		@SS-19: Light Gray, Munsell: 5Y 7/1		78.5	SS-19	13	18	19		32			
-6.1		@SS-20: No Recovery		83.5	SS-20	10	14	17		31			
-11.1				88.5	SS-21	9	9	12		21			

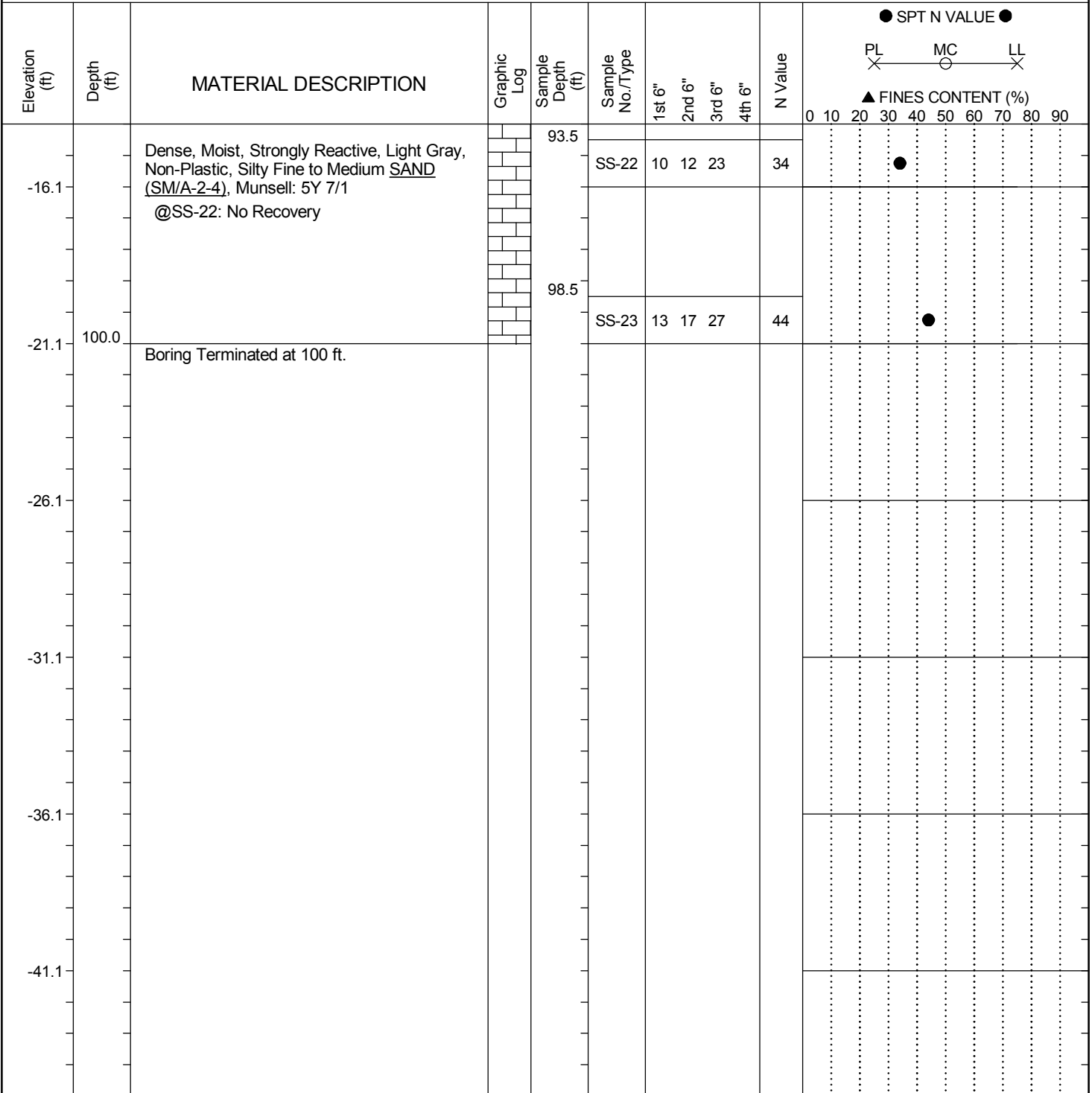
### LEGEND

Continued Next Page

<b>SAMPLER TYPE</b>	<b>DRILLING METHOD</b>
SS - Split Spoon	HSA - Hollow Stem Auger
UD - Undisturbed Sample	RW - Rotary Wash
AWG - Rock Core, 1-1/8"	CFA - Continuous Flight Augers
NQ - Rock Core, 1-7/8"	RC - Rock Core
CU - Cuttings	DC - Driving Casing
CT - Continuous Tube	

# SCDOT Soil Test Log

<b>Project ID:</b> P037127	<b>County:</b> Dorchester	<b>Boring No.:</b> B-2
<b>Site Description:</b> US 15 Bridge Replacement over Indian Field Swamp		<b>Route:</b> US 15
<b>Eng./Geo.:</b> R. Wessinger	<b>Boring Location:</b> 91+29	<b>Offset:</b> 8'-LT
<b>Alignment:</b> Existing CL	<b>Date Started:</b> 9/26/2019	
<b>Elev.:</b> 78.9 ft	<b>Latitude:</b> 33.231532	<b>Longitude:</b> -80.538971
<b>Total Depth:</b> 100 ft	<b>Soil Depth:</b> 100 ft	<b>Core Depth:</b> 0 ft
<b>Date Completed:</b> 9/26/2019		
<b>Bore Hole Diameter (in):</b> 4	<b>Sampler Configuration</b>	<b>Liner Required:</b> Y (N)
<b>Liner Used:</b> Y (N)		
<b>Drill Machine:</b> CME 45B	<b>Drill Method:</b> RW	<b>Hammer Type:</b> Automatic
<b>Energy Ratio:</b> 92%		
<b>Core Size:</b> N/A	<b>Driller:</b> L. Guempel	<b>Groundwater:</b> TOB 2.5 ft
<b>24HR:</b> 2 ft		



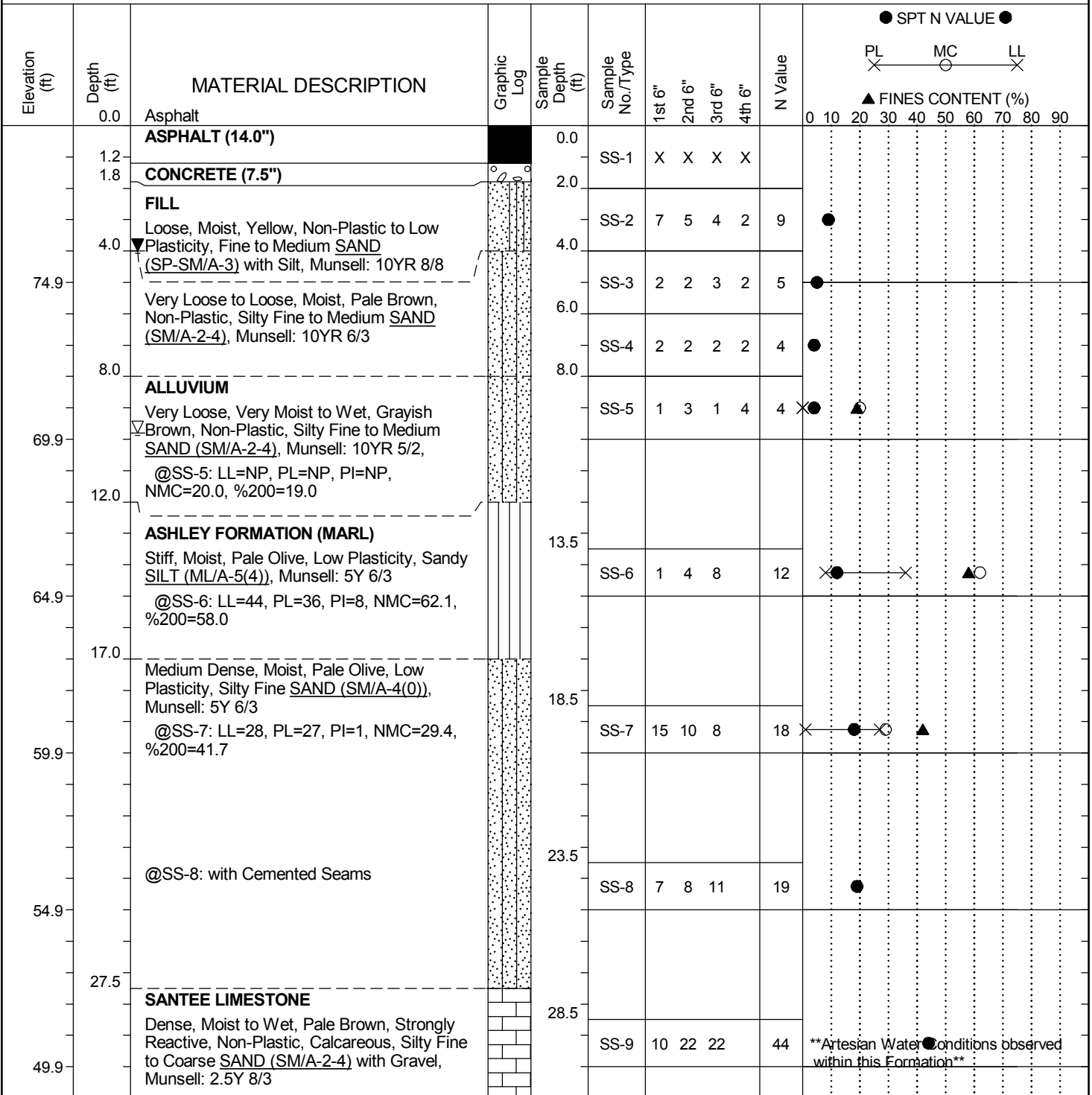
## LEGEND

SAMPLER TYPE		DRILLING METHOD	
SS - Split Spoon	NQ - Rock Core, 1-7/8"	HSA - Hollow Stem Auger	RW - Rotary Wash
UD - Undisturbed Sample	CU - Cuttings	CFA - Continuous Flight Augers	RC - Rock Core
AWG - Rock Core, 1-1/8"	CT - Continuous Tube	DC - Driving Casing	



# SCDOT Soil Test Log

<b>Project ID:</b> P037127	<b>County:</b> Dorchester	<b>Boring No.:</b> B-3
<b>Site Description:</b> US 15 Bridge Replacement over Indian Field Swamp		<b>Route:</b> US 15
<b>Eng./Geo.:</b> R. Wessinger	<b>Boring Location:</b> 98+06	<b>Offset:</b> 8'-RT
<b>Alignment:</b> Existing CL	<b>Date Started:</b> 9/23/2019	
<b>Elev.:</b> 79.9 ft	<b>Latitude:</b> 33.229801	<b>Longitude:</b> -80.53979
<b>Total Depth:</b> 100 ft	<b>Soil Depth:</b> 100 ft	<b>Core Depth:</b> 0 ft
<b>Date Completed:</b> 9/23/2019		
<b>Bore Hole Diameter (in):</b> 4	<b>Sampler Configuration</b>	<b>Liner Required:</b> Y (N)
<b>Liner Used:</b> Y (N)		
<b>Drill Machine:</b> CME 45B	<b>Drill Method:</b> RW	<b>Hammer Type:</b> Automatic
<b>Energy Ratio:</b> 92%		
<b>Core Size:</b> N/A	<b>Driller:</b> L. Guempel	<b>Groundwater:</b> TOB 9.8 ft
<b>24HR:</b> 4 ft		



## LEGEND

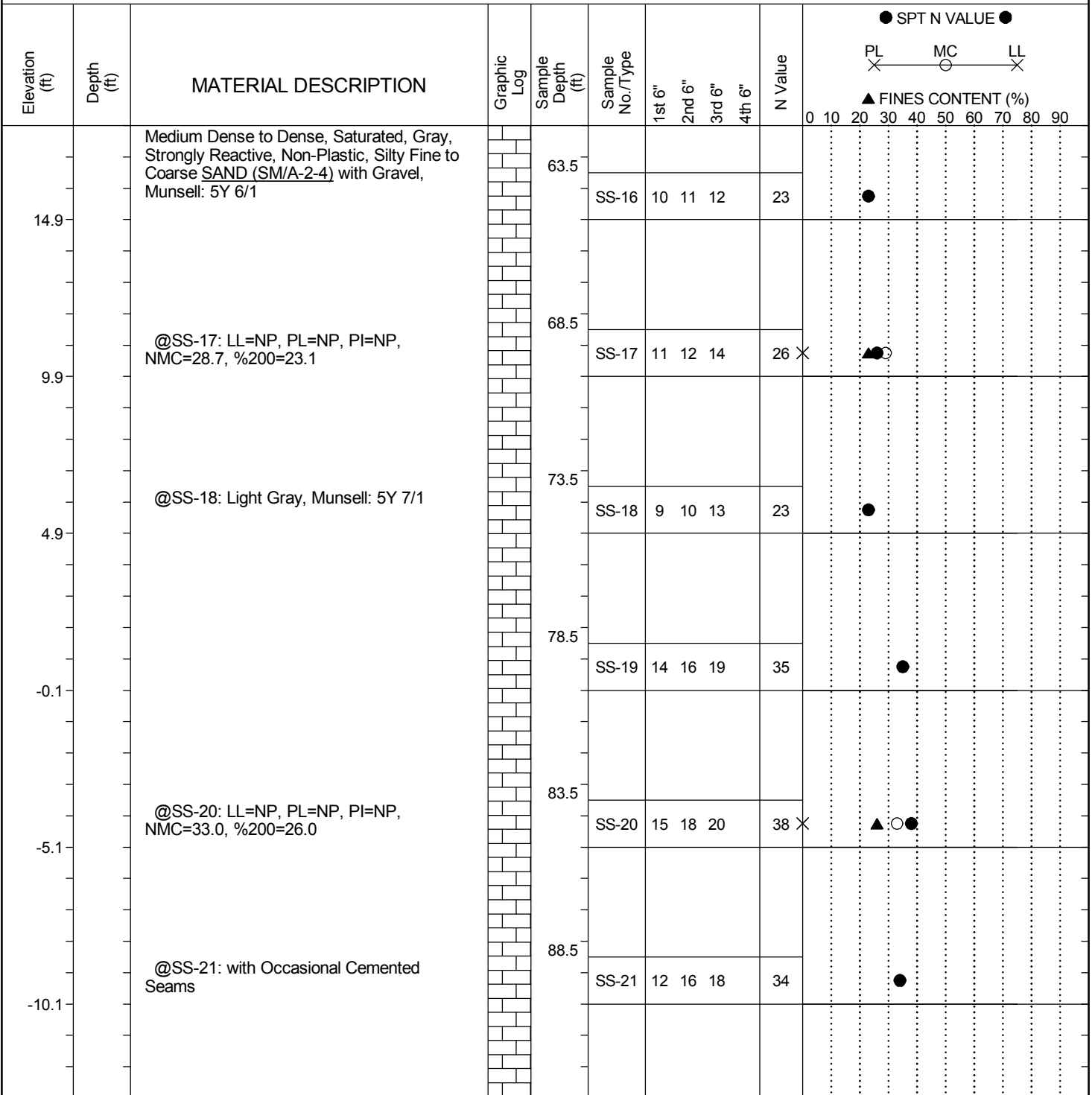
Continued Next Page

SAMPLER TYPE		DRILLING METHOD	
SS - Split Spoon	NQ - Rock Core, 1-7/8"	HSA - Hollow Stem Auger	RW - Rotary Wash
UD - Undisturbed Sample	CU - Cuttings	CFA - Continuous Flight Augers	RC - Rock Core
AWG - Rock Core, 1-1/8"	CT - Continuous Tube	DC - Driving Casing	



# SCDOT Soil Test Log

<b>Project ID:</b> P037127	<b>County:</b> Dorchester	<b>Boring No.:</b> B-3
<b>Site Description:</b> US 15 Bridge Replacement over Indian Field Swamp		<b>Route:</b> US 15
<b>Eng./Geo.:</b> R. Wessinger	<b>Boring Location:</b> 98+06	<b>Offset:</b> 8'-RT <b>Alignment:</b> Existing CL
<b>Elev.:</b> 79.9 ft	<b>Latitude:</b> 33.229801	<b>Longitude:</b> -80.53979 <b>Date Started:</b> 9/23/2019
<b>Total Depth:</b> 100 ft	<b>Soil Depth:</b> 100 ft	<b>Core Depth:</b> 0 ft <b>Date Completed:</b> 9/23/2019
<b>Bore Hole Diameter (in):</b> 4	<b>Sampler Configuration</b>	<b>Liner Required:</b> Y (N) <b>Liner Used:</b> Y (N)
<b>Drill Machine:</b> CME 45B	<b>Drill Method:</b> RW	<b>Hammer Type:</b> Automatic <b>Energy Ratio:</b> 92%
<b>Core Size:</b> N/A	<b>Driller:</b> L. Guempel	<b>Groundwater:</b> TOB 9.8 ft <b>24HR:</b> 4 ft



### LEGEND

Continued Next Page

SAMPLER TYPE		DRILLING METHOD	
SS - Split Spoon	NQ - Rock Core, 1-7/8"	HSA - Hollow Stem Auger	RW - Rotary Wash
UD - Undisturbed Sample	CU - Cuttings	CFA - Continuous Flight Augers	RC - Rock Core
AWG - Rock Core, 1-1/8"	CT - Continuous Tube	DC - Driving Casing	

# SCDOT Soil Test Log

<b>Project ID:</b> P037127	<b>County:</b> Dorchester	<b>Boring No.:</b> B-3
<b>Site Description:</b> US 15 Bridge Replacement over Indian Field Swamp		<b>Route:</b> US 15
<b>Eng./Geo.:</b> R. Wessinger	<b>Boring Location:</b> 98+06	<b>Offset:</b> 8'-RT
<b>Alignment:</b> Existing CL	<b>Date Started:</b> 9/23/2019	
<b>Elev.:</b> 79.9 ft	<b>Latitude:</b> 33.229801	<b>Longitude:</b> -80.53979
<b>Total Depth:</b> 100 ft	<b>Soil Depth:</b> 100 ft	<b>Core Depth:</b> 0 ft
<b>Date Completed:</b> 9/23/2019		
<b>Bore Hole Diameter (in):</b> 4	<b>Sampler Configuration</b>	<b>Liner Required:</b> Y (N)
<b>Liner Used:</b> Y (N)	<b>Drill Machine:</b> CME 45B	<b>Drill Method:</b> RW
<b>Hammer Type:</b> Automatic	<b>Energy Ratio:</b> 92%	
<b>Core Size:</b> N/A	<b>Driller:</b> L. Guempel	<b>Groundwater:</b> TOB 9.8 ft
<b>24HR:</b> 4 ft		

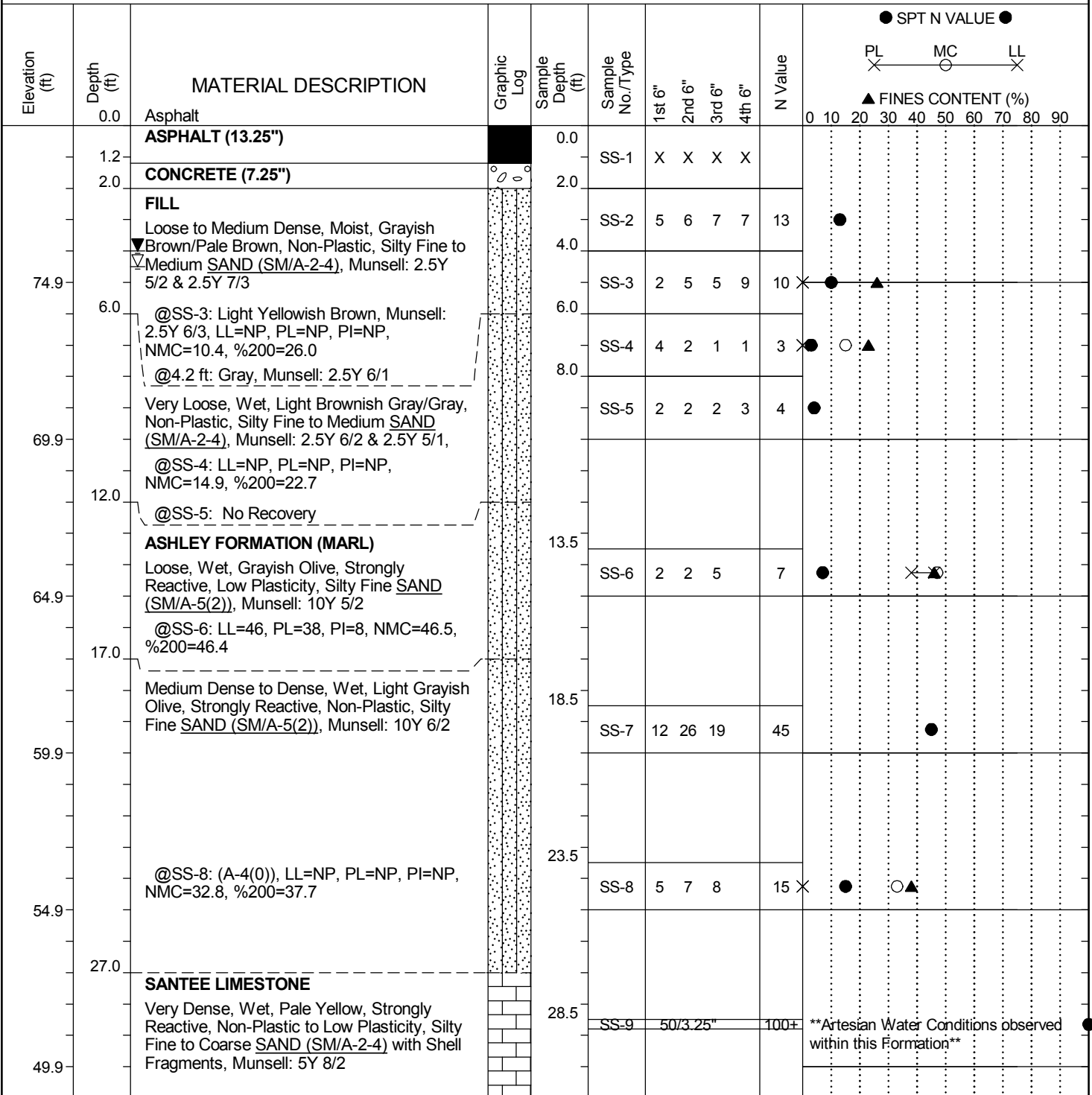
Elevation (ft)	Depth (ft)	MATERIAL DESCRIPTION	Graphic Log	Sample Depth (ft)	Sample No./Type	1st 6"	2nd 6"	3rd 6"	4th 6"	N Value	SPT N VALUE									
											0	10	20	30	40	50	60	70	80	90
-15.1		Medium Dense to Dense, Saturated, Gray, Strongly Reactive, Non-Plastic, Silty Fine to Coarse SAND (SM/A-2-4) with Gravel, Munsell: 5Y 6/1		93.5	SS-22	11	14	15		29	● SPT N VALUE ● PL X — MC ○ — LL X ▲ FINES CONTENT (%)									
						98.5	SS-23	8	12	14		26								
-20.1	100.0	Boring Terminated at 100 ft.																		
-25.1																				
-30.1																				
-35.1																				
-40.1																				

### LEGEND

SAMPLER TYPE		DRILLING METHOD	
SS - Split Spoon	NQ - Rock Core, 1-7/8"	HSA - Hollow Stem Auger	RW - Rotary Wash
UD - Undisturbed Sample	CU - Cuttings	CFA - Continuous Flight Augers	RC - Rock Core
AWG - Rock Core, 1-1/8"	CT - Continuous Tube	DC - Driving Casing	

# SCDOT Soil Test Log

<b>Project ID:</b> P037127	<b>County:</b> Dorchester	<b>Boring No.:</b> B-4
<b>Site Description:</b> US 15 Bridge Replacement over Indian Field Swamp	<b>Route:</b> US 15	
<b>Eng./Geo.:</b> C. Piercy	<b>Boring Location:</b> 98+86	<b>Offset:</b> 6'-LT
<b>Alignment:</b> Existing CL		
<b>Elev.:</b> 79.9 ft	<b>Latitude:</b> 33.229583	<b>Longitude:</b> -80.539836
<b>Date Started:</b> 9/24/2019		
<b>Total Depth:</b> 100 ft	<b>Soil Depth:</b> 100 ft	<b>Core Depth:</b> 0 ft
<b>Date Completed:</b> 9/24/2019		
<b>Bore Hole Diameter (in):</b> 4	<b>Sampler Configuration</b>	<b>Liner Required:</b> Y (N)
<b>Liner Used:</b> Y (N)		
<b>Drill Machine:</b> CME 45B	<b>Drill Method:</b> RW	<b>Hammer Type:</b> Automatic
<b>Energy Ratio:</b> 92%		
<b>Core Size:</b> N/A	<b>Driller:</b> L. Guempel	<b>Groundwater:</b> TOB 4.5 ft
<b>24HR:</b> 4 ft		



## LEGEND

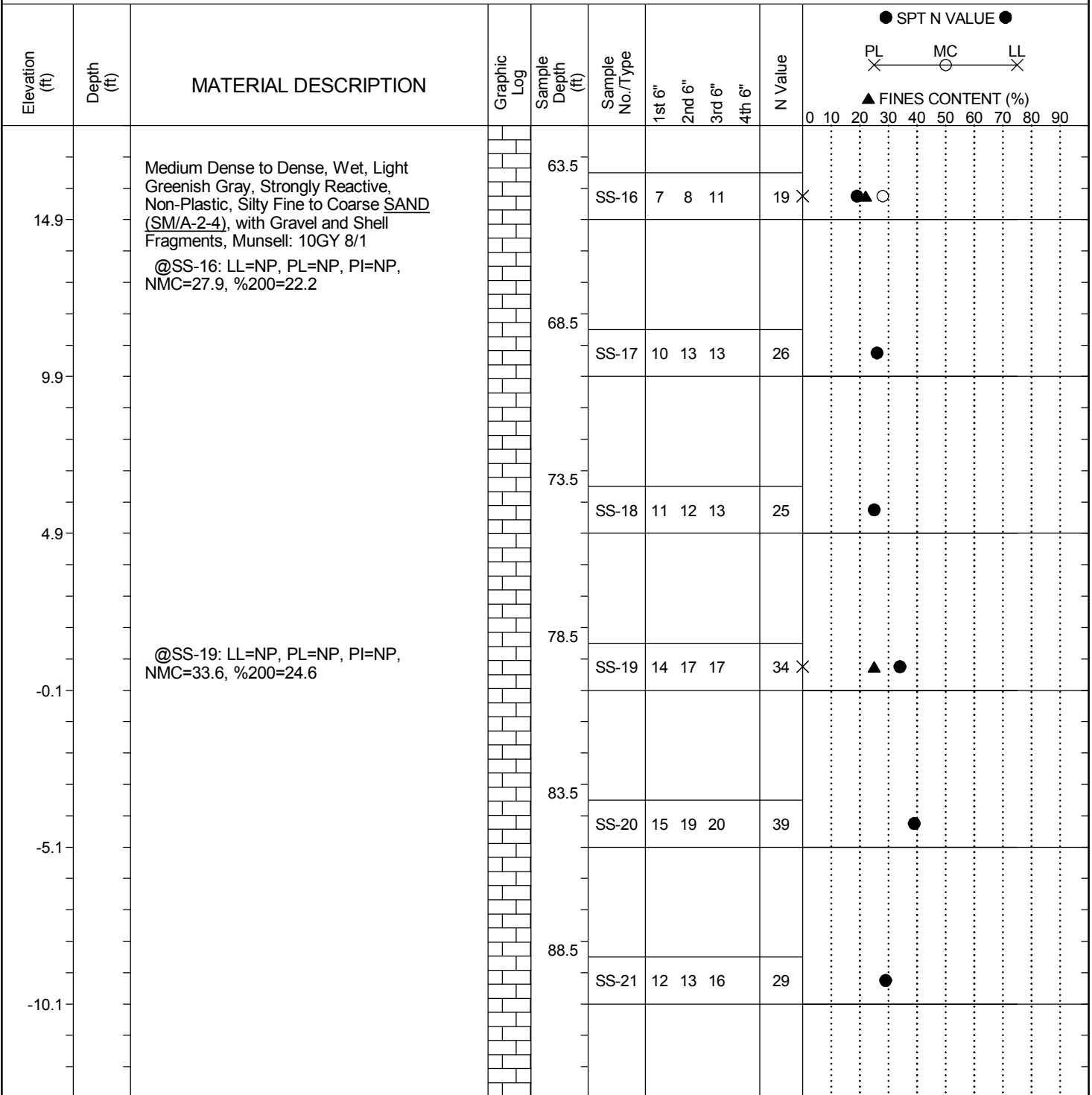
SAMPLER TYPE		DRILLING METHOD	
SS - Split Spoon	NQ - Rock Core, 1-7/8"	HSA - Hollow Stem Auger	RW - Rotary Wash
UD - Undisturbed Sample	CU - Cuttings	CFA - Continuous Flight Augers	RC - Rock Core
AWG - Rock Core, 1-1/8"	CT - Continuous Tube	DC - Driving Casing	

Continued Next Page



# SCDOT Soil Test Log

<b>Project ID:</b> P037127	<b>County:</b> Dorchester	<b>Boring No.:</b> B-4
<b>Site Description:</b> US 15 Bridge Replacement over Indian Field Swamp		<b>Route:</b> US 15
<b>Eng./Geo.:</b> C. Piercy	<b>Boring Location:</b> 98+86	<b>Offset:</b> 6'-LT
<b>Alignment:</b> Existing CL	<b>Elev.:</b> 79.9 ft	<b>Latitude:</b> 33.229583
<b>Longitude:</b> -80.539836	<b>Date Started:</b> 9/24/2019	
<b>Total Depth:</b> 100 ft	<b>Soil Depth:</b> 100 ft	<b>Core Depth:</b> 0 ft
<b>Date Completed:</b> 9/24/2019	<b>Bore Hole Diameter (in):</b> 4	<b>Sampler Configuration</b>
<b>Liner Required:</b> Y (N)	<b>Liner Used:</b> Y (N)	
<b>Drill Machine:</b> CME 45B	<b>Drill Method:</b> RW	<b>Hammer Type:</b> Automatic
<b>Energy Ratio:</b> 92%	<b>Core Size:</b> N/A	<b>Driller:</b> L. Guempel
<b>Groundwater:</b> TOB	4.5 ft	<b>24HR:</b> 4 ft



## LEGEND

Continued Next Page

SAMPLER TYPE		DRILLING METHOD	
SS - Split Spoon	NQ - Rock Core, 1-7/8"	HSA - Hollow Stem Auger	RW - Rotary Wash
UD - Undisturbed Sample	CU - Cuttings	CFA - Continuous Flight Augers	RC - Rock Core
AWG - Rock Core, 1-1/8"	CT - Continuous Tube	DC - Driving Casing	

# SCDOT Soil Test Log

<b>Project ID:</b> P037127	<b>County:</b> Dorchester	<b>Boring No.:</b> B-4
<b>Site Description:</b> US 15 Bridge Replacement over Indian Field Swamp	<b>Route:</b> US 15	
<b>Eng./Geo.:</b> C. Piercy	<b>Boring Location:</b> 98+86	<b>Offset:</b> 6'-LT
<b>Alignment:</b> Existing CL		
<b>Elev.:</b> 79.9 ft	<b>Latitude:</b> 33.229583	<b>Longitude:</b> -80.539836
<b>Date Started:</b> 9/24/2019		
<b>Total Depth:</b> 100 ft	<b>Soil Depth:</b> 100 ft	<b>Core Depth:</b> 0 ft
<b>Date Completed:</b> 9/24/2019		
<b>Bore Hole Diameter (in):</b> 4	<b>Sampler Configuration</b>	<b>Liner Required:</b> Y (N)
<b>Liner Used:</b> Y (N)		
<b>Drill Machine:</b> CME 45B	<b>Drill Method:</b> RW	<b>Hammer Type:</b> Automatic
<b>Energy Ratio:</b> 92%		
<b>Core Size:</b> N/A	<b>Driller:</b> L. Guempel	<b>Groundwater:</b> TOB 4.5 ft
<b>24HR:</b> 4 ft		

Elevation (ft)	Depth (ft)	MATERIAL DESCRIPTION	Graphic Log	Sample Depth (ft)	Sample No./Type	SPT N VALUE				N Value	FINES CONTENT (%)									
						1st 6"	2nd 6"	3rd 6"	4th 6"		PL	MC	LL	0	10	20	30	40	50	60
-15.1		Medium Dense to Dense, Wet, Light Greenish Gray, Strongly Reactive, Non-Plastic, Silty Fine to Coarse SAND (SM/A-2-4), with Gravel and Shell Fragments, Munsell: 10GY 8/1		93.5	SS-22	11	13	15		28										
-20.1	100.0	Boring Terminated at 100 ft.		98.5	SS-23	9	14	16		30										
-25.1																				
-30.1																				
-35.1																				
-40.1																				

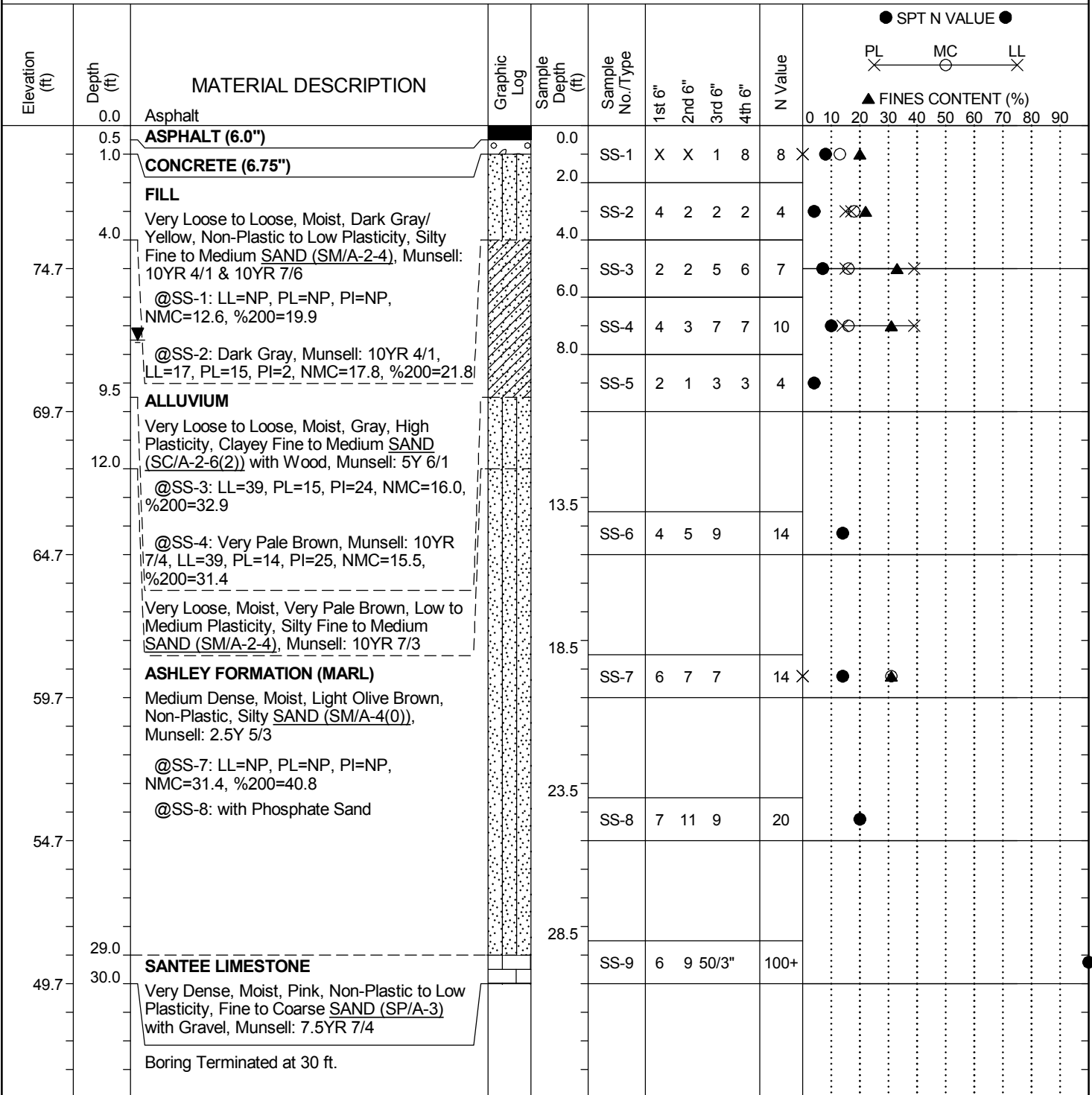
## LEGEND

<b>SAMPLER TYPE</b> SS - Split Spoon UD - Undisturbed Sample AWG - Rock Core, 1-1/8"		NQ - Rock Core, 1-7/8" CU - Cuttings CT - Continuous Tube		<b>DRILLING METHOD</b> HSA - Hollow Stem Auger CFA - Continuous Flight Augers DC - Driving Casing		RW - Rotary Wash RC - Rock Core	
---	--	---	--	--	--	------------------------------------	--



# SCDOT Soil Test Log

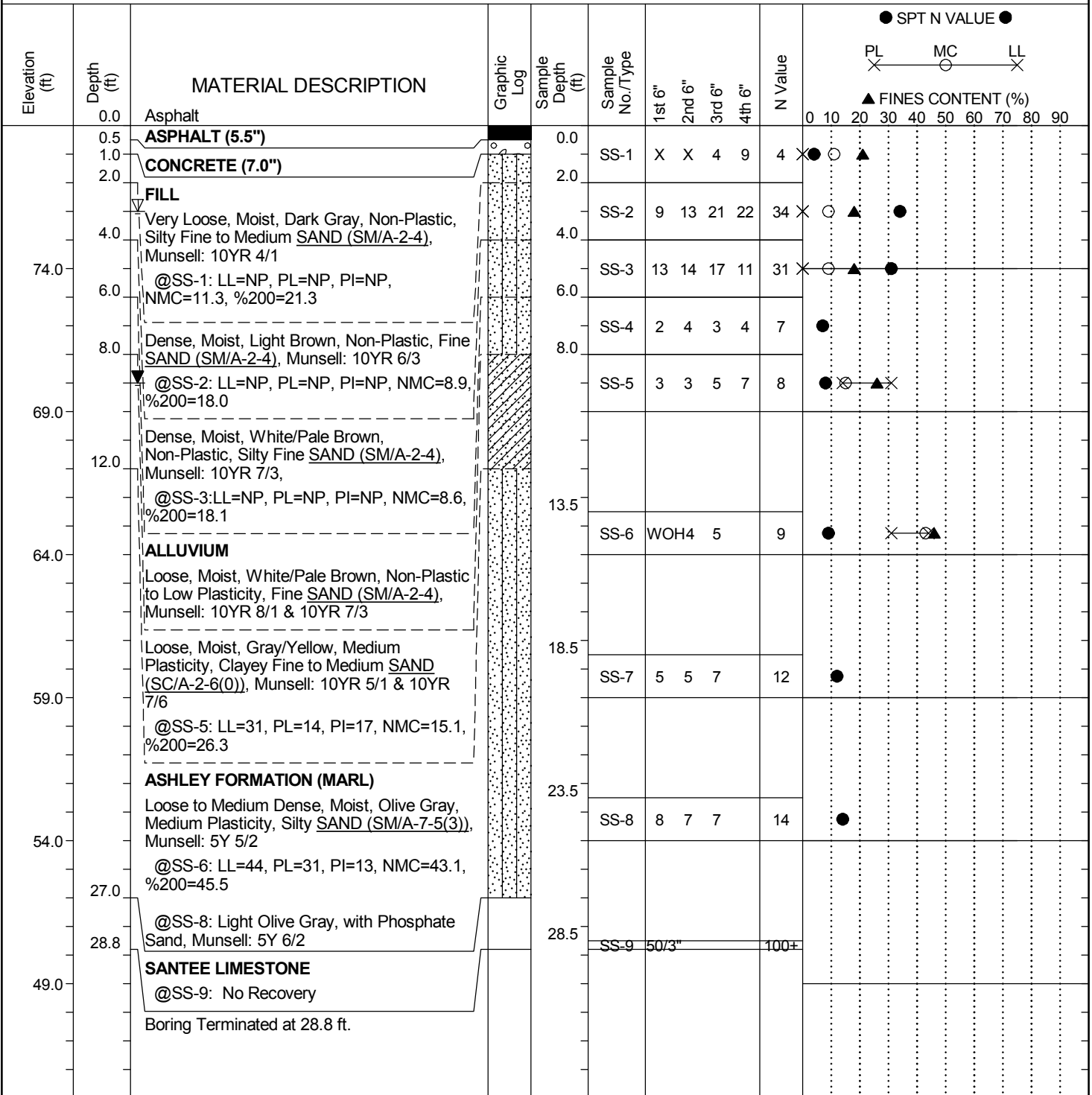
<b>Project ID:</b> P037127	<b>County:</b> Dorchester	<b>Boring No.:</b> R-1
<b>Site Description:</b> US 15 Bridge Replacement over Indian Field Swamp		<b>Route:</b> US 15
<b>Eng./Geo.:</b> R. Wessinger	<b>Boring Location:</b> 88+01	<b>Offset:</b> 7'-RT
<b>Alignment:</b> Existing CL	<b>Date Started:</b> 9/25/2019	
<b>Elev.:</b> 79.7 ft	<b>Latitude:</b> 33.232391	<b>Longitude:</b> -80.538645
<b>Total Depth:</b> 30 ft	<b>Soil Depth:</b> 30 ft	<b>Core Depth:</b> 0 ft
<b>Date Completed:</b> 9/25/2019		
<b>Bore Hole Diameter (in):</b> 4	<b>Sampler Configuration</b>	<b>Liner Required:</b> Y (N)
<b>Liner Used:</b> Y (N)		
<b>Drill Machine:</b> CME 45B	<b>Drill Method:</b> RW	<b>Hammer Type:</b> Automatic
<b>Energy Ratio:</b> 92%		
<b>Core Size:</b> N/A	<b>Driller:</b> L. Guempel	<b>Groundwater:</b> TOB
<b>24HR:</b> 7.5 ft		



SC\_DOT\_G6100\_120 - US-15 RBO INDIAN FIELD SWAMP.GPJ\_FME2017.GDT\_10/31/19

# SCDOT Soil Test Log

<b>Project ID:</b> P037127	<b>County:</b> Dorchester	<b>Boring No.:</b> R-2
<b>Site Description:</b> US 15 Bridge Replacement over Indian Field Swamp		<b>Route:</b> US 15
<b>Eng./Geo.:</b> R. Wessinger	<b>Boring Location:</b> 93+00	<b>Offset:</b> 8'-LT
<b>Alignment:</b> Existing CL	<b>Elev.:</b> 79.0 ft	<b>Latitude:</b> 33.231092
<b>Longitude:</b> -80.539164	<b>Date Started:</b> 9/26/2019	
<b>Total Depth:</b> 28.8 ft	<b>Soil Depth:</b> 28.8 ft	<b>Core Depth:</b> 0 ft
<b>Date Completed:</b> 9/26/2019		
<b>Bore Hole Diameter (in):</b> 4	<b>Sampler Configuration</b>	<b>Liner Required:</b> Y (N)
<b>Liner Used:</b> Y (N)	<b>Drill Machine:</b> CME 45B	<b>Drill Method:</b> RW
<b>Hammer Type:</b> Automatic	<b>Energy Ratio:</b> 92%	
<b>Core Size:</b> N/A	<b>Driller:</b> L. Guempel	<b>Groundwater:</b> TOB 3 ft
		<b>24HR:</b> 9 ft

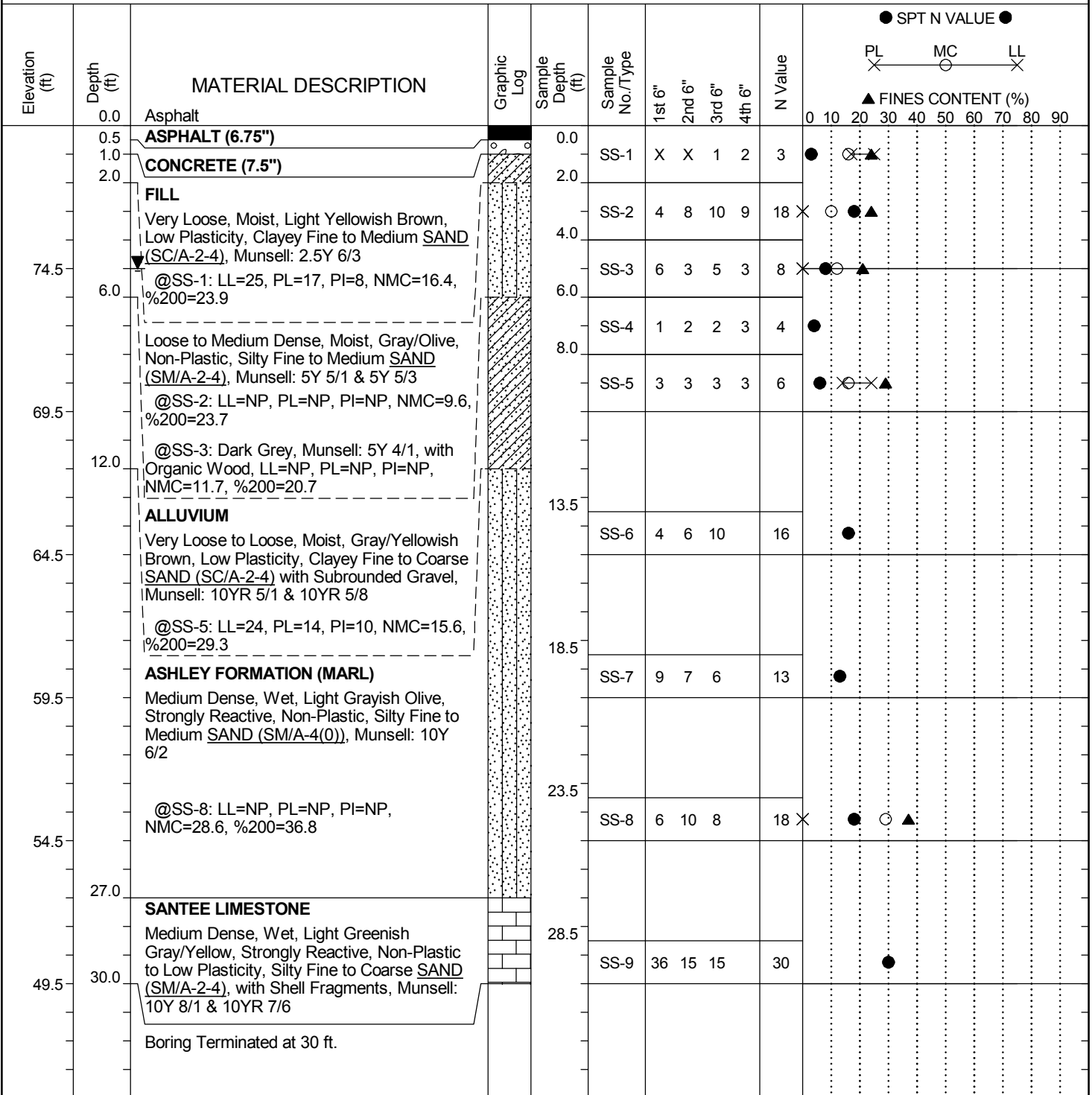


## LEGEND

SAMPLER TYPE		DRILLING METHOD	
SS - Split Spoon	NQ - Rock Core, 1-7/8"	HSA - Hollow Stem Auger	RW - Rotary Wash
UD - Undisturbed Sample	CU - Cuttings	CFA - Continuous Flight Augers	RC - Rock Core
AWG - Rock Core, 1-1/8"	CT - Continuous Tube	DC - Driving Casing	

# SCDOT Soil Test Log

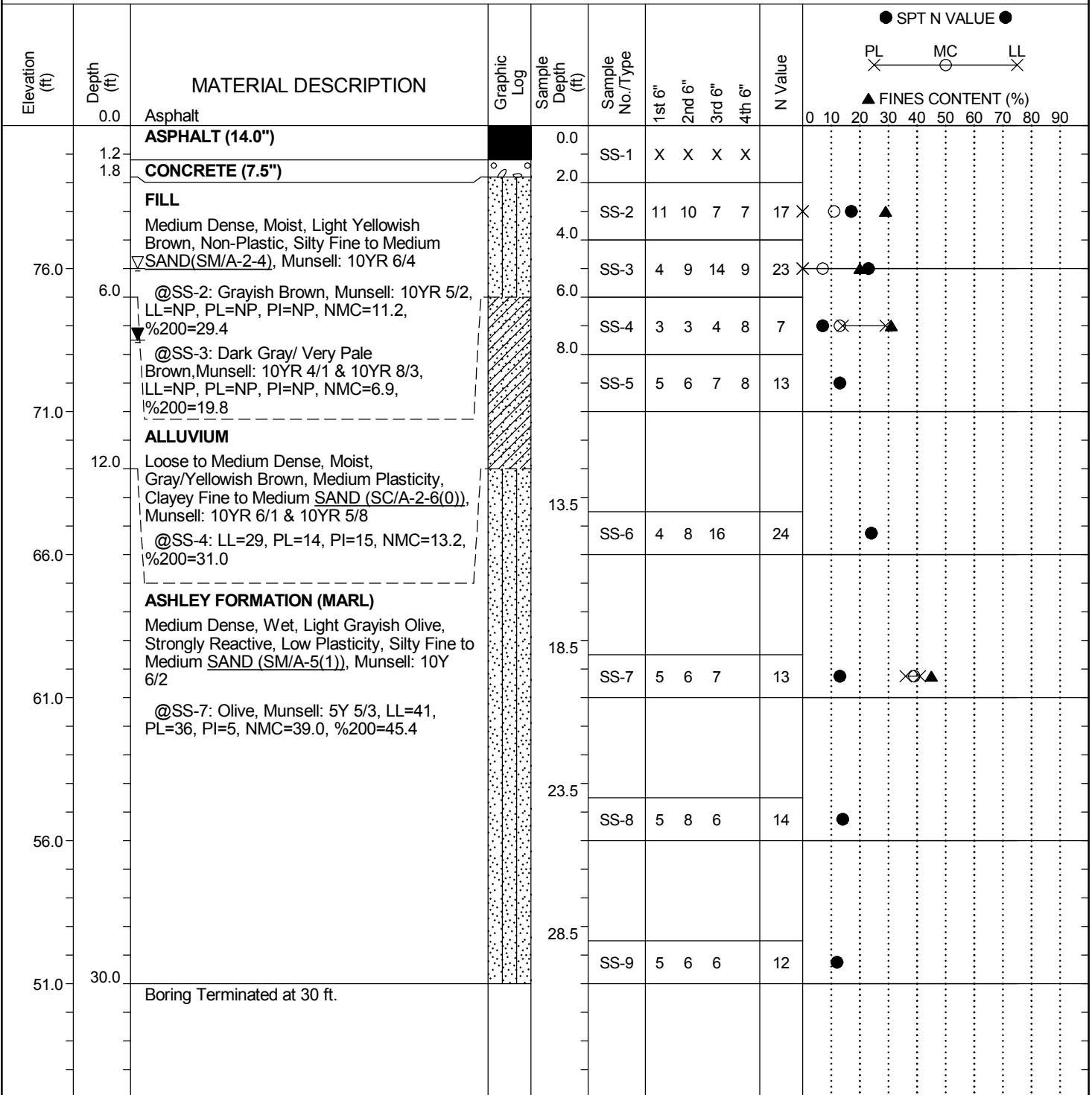
<b>Project ID:</b> P037127	<b>County:</b> Dorchester	<b>Boring No.:</b> R-3
<b>Site Description:</b> US 15 Bridge Replacement over Indian Field Swamp		<b>Route:</b> US 15
<b>Eng./Geo.:</b> R. Wessinger	<b>Boring Location:</b> 96+01	<b>Offset:</b> 7'-RT
<b>Alignment:</b> Existing CL	<b>Date Started:</b> 9/24/2019	
<b>Elev.:</b> 79.5 ft	<b>Latitude:</b> 33.230331	<b>Longitude:</b> -80.539554
<b>Total Depth:</b> 30 ft	<b>Soil Depth:</b> 30 ft	<b>Core Depth:</b> 0 ft
<b>Date Completed:</b> 9/24/2019		
<b>Bore Hole Diameter (in):</b> 4	<b>Sampler Configuration</b>	<b>Liner Required:</b> Y (N)
<b>Liner Used:</b> Y (N)		
<b>Drill Machine:</b> CME 45B	<b>Drill Method:</b> RW	<b>Hammer Type:</b> Automatic
<b>Energy Ratio:</b> 92%		
<b>Core Size:</b> N/A	<b>Driller:</b> L. Guempel	<b>Groundwater:</b> TOB 5 ft
<b>24HR:</b> 5 ft		



SC DOT - G6100-120 - US-15 RBO INDIAN FIELD SWAMP.GPJ\_FME2017.GDT\_10/31/19

# SCDOT Soil Test Log

<b>Project ID:</b> P037127	<b>County:</b> Dorchester	<b>Boring No.:</b> R-4
<b>Site Description:</b> US 15 Bridge Replacement over Indian Field Swamp		<b>Route:</b> US 15
<b>Eng./Geo.:</b> R. Wessinger	<b>Boring Location:</b> 102+01	<b>Offset:</b> 7'-RT
<b>Alignment:</b> Existing CL	<b>Elev.:</b> 81.0 ft	<b>Latitude:</b> 33.228764
<b>Longitude:</b> -80.540174	<b>Date Started:</b> 9/24/2019	
<b>Total Depth:</b> 30 ft	<b>Soil Depth:</b> 30 ft	<b>Core Depth:</b> 0 ft
<b>Date Completed:</b> 9/24/2019	<b>Bore Hole Diameter (in):</b> 4	<b>Sampler Configuration:</b>
<b>Liner Required:</b> Y (N)	<b>Liner Used:</b> Y (N)	
<b>Drill Machine:</b> CME 45B	<b>Drill Method:</b> RW	<b>Hammer Type:</b> Automatic
<b>Energy Ratio:</b> 92%	<b>Core Size:</b> N/A	<b>Driller:</b> L. Guempel
<b>Groundwater:</b> TOB	<b>5 ft</b>	<b>24HR:</b> 7.5 ft

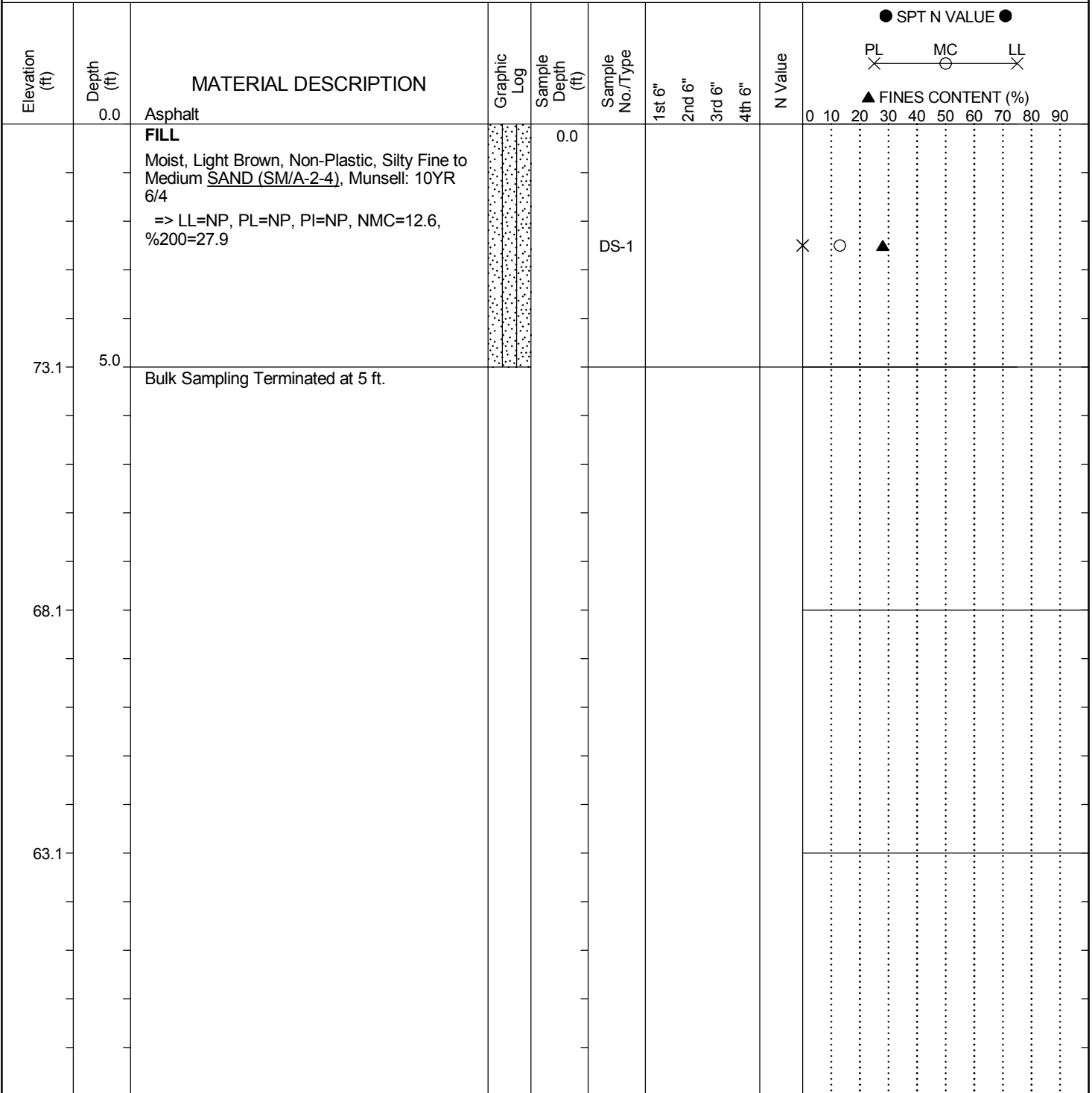


## LEGEND

SAMPLER TYPE		DRILLING METHOD	
SS - Split Spoon	NQ - Rock Core, 1-7/8"	HSA - Hollow Stem Auger	RW - Rotary Wash
UD - Undisturbed Sample	CU - Cuttings	CFA - Continuous Flight Augers	RC - Rock Core
AWG - Rock Core, 1-1/8"	CT - Continuous Tube	DC - Driving Casing	

# SCDOT Soil Test Log

<b>Project ID:</b> P037127	<b>County:</b> Dorchester	<b>Boring No.:</b> BS-1
<b>Site Description:</b> US 15 Bridge Replacement over Indian Field Swamp		<b>Route:</b> US 15
<b>Eng./Geo.:</b> M. Touchberry	<b>Boring Location:</b> 91+15	<b>Offset:</b> 14'-LT
<b>Alignment:</b> Existing CL	<b>Date Started:</b> 9/19/2019	
<b>Elev.:</b> 78.1 ft	<b>Latitude:</b> 33.231563	<b>Longitude:</b> -80.538935
<b>Total Depth:</b> 5 ft	<b>Soil Depth:</b> 5 ft	<b>Core Depth:</b> 0 ft
<b>Date Completed:</b> 9/19/2019		
<b>Bore Hole Diameter (in):</b> 6	<b>Sampler Configuration:</b>	<b>Liner Required:</b> Y (N)
<b>Liner Used:</b> Y (N)	<b>Drill Machine:</b> Manual Auger	<b>Drill Method:</b> N/A
<b>Hammer Type:</b>	<b>Energy Ratio:</b> N/A%	
<b>Core Size:</b> N/A	<b>Driller:</b> M. Touchberry	<b>Groundwater:</b> TOB NR
<b>24HR:</b> NR		

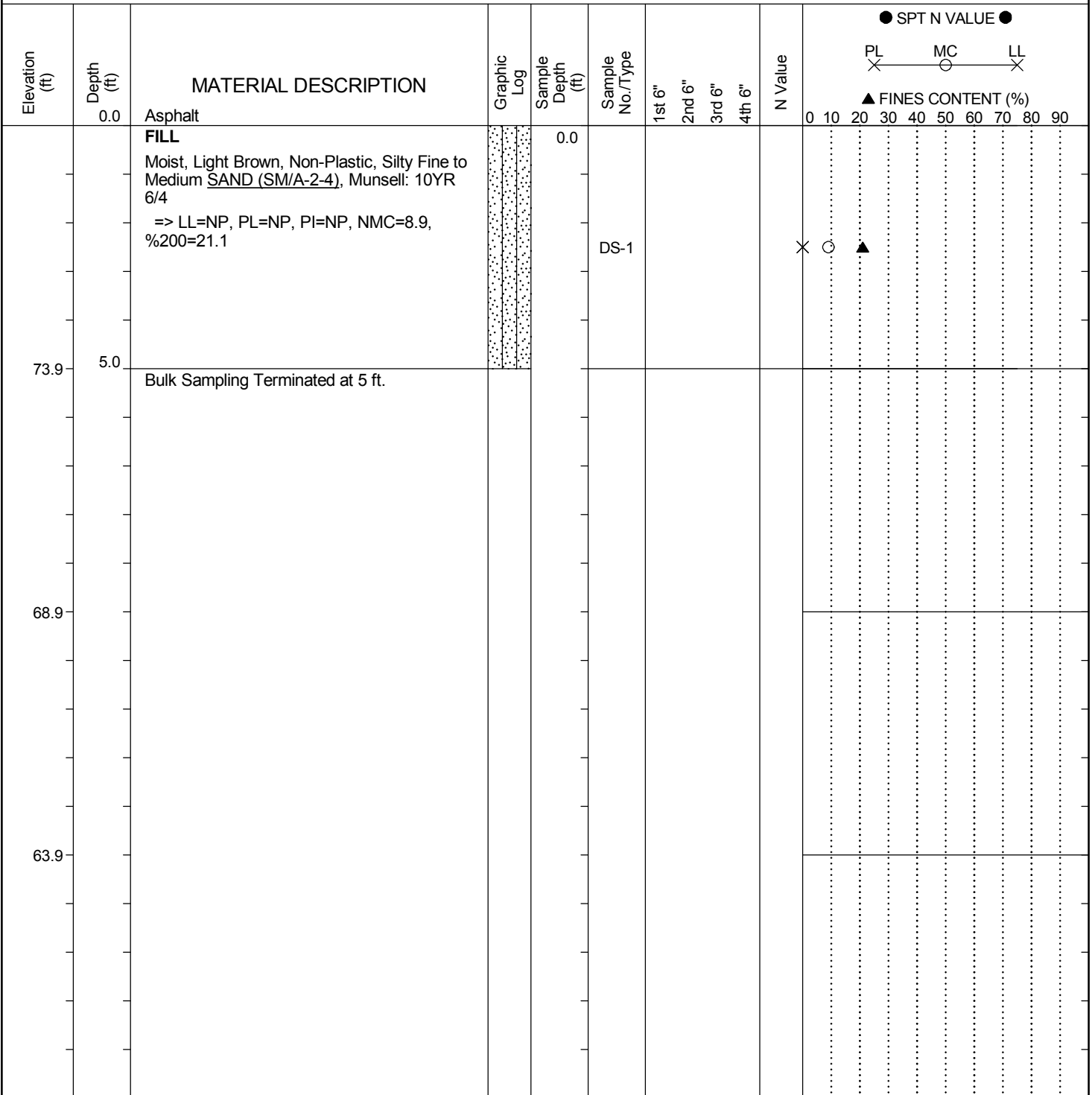


## LEGEND

SAMPLER TYPE		DRILLING METHOD	
SS - Split Spoon	NQ - Rock Core, 1-7/8"	HSA - Hollow Stem Auger	RW - Rotary Wash
UD - Undisturbed Sample	CU - Cuttings	CFA - Continuous Flight Augers	RC - Rock Core
AWG - Rock Core, 1-1/8"	CT - Continuous Tube	DC - Driving Casing	

# SCDOT Soil Test Log

<b>Project ID:</b> P037127	<b>County:</b> Dorchester	<b>Boring No.:</b> BS-2
<b>Site Description:</b> US 15 Bridge Replacement over Indian Field Swamp		<b>Route:</b> US 15
<b>Eng./Geo.:</b> M. Touchberry	<b>Boring Location:</b> 95+95	<b>Offset:</b> 14'-RT
<b>Alignment:</b> Existing CL	<b>Date Started:</b> 9/19/2019	
<b>Elev.:</b> 78.9 ft	<b>Latitude:</b> 33.230351	<b>Longitude:</b> -80.539569
<b>Total Depth:</b> 5 ft	<b>Soil Depth:</b> 5 ft	<b>Core Depth:</b> 0 ft
<b>Date Completed:</b> 9/19/2019		
<b>Bore Hole Diameter (in):</b> 6	<b>Sampler Configuration:</b>	<b>Liner Required:</b> Y (N)
<b>Liner Used:</b> Y (N)	<b>Drill Machine:</b> Manual Auger	<b>Drill Method:</b> N/A
<b>Hammer Type:</b>	<b>Energy Ratio:</b> N/A%	
<b>Core Size:</b> N/A	<b>Driller:</b> M. Touchberry	<b>Groundwater:</b> TOB NR
<b>24HR:</b> NR		

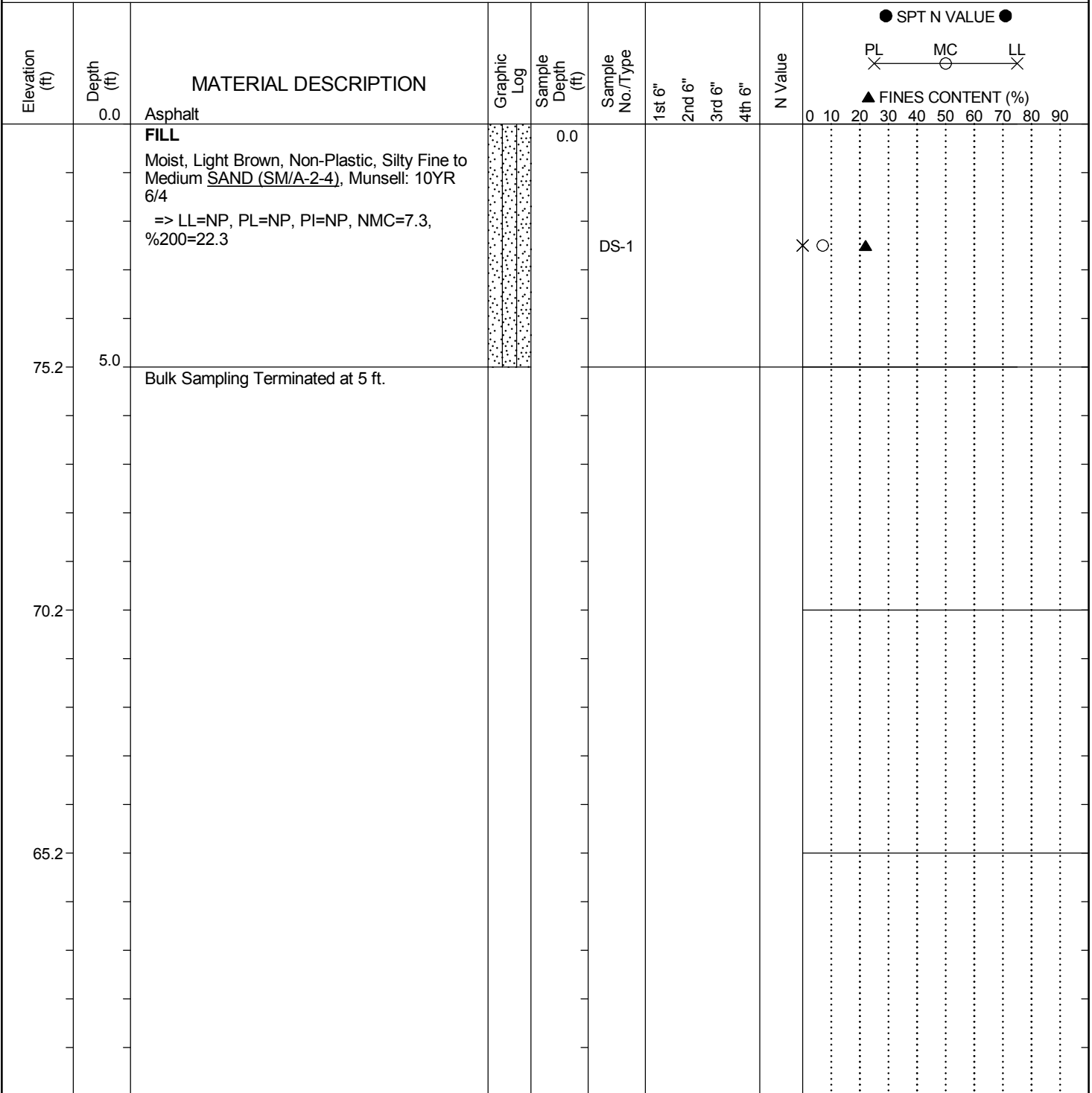


## LEGEND

SAMPLER TYPE		DRILLING METHOD	
SS - Split Spoon	NQ - Rock Core, 1-7/8"	HSA - Hollow Stem Auger	RW - Rotary Wash
UD - Undisturbed Sample	CU - Cuttings	CFA - Continuous Flight Augers	RC - Rock Core
AWG - Rock Core, 1-1/8"	CT - Continuous Tube	DC - Driving Casing	

# SCDOT Soil Test Log

<b>Project ID:</b> P037127	<b>County:</b> Dorchester	<b>Boring No.:</b> BS-3
<b>Site Description:</b> US 15 Bridge Replacement over Indian Field Swamp		<b>Route:</b> US 15
<b>Eng./Geo.:</b> M. Touchberry	<b>Boring Location:</b> 98+98	<b>Offset:</b> 15'-RT
<b>Alignment:</b> Existing CL	<b>Date Started:</b> 9/19/2019	
<b>Elev.:</b> 80.2 ft	<b>Latitude:</b> 33.229572	<b>Longitude:</b> -80.539914
<b>Total Depth:</b> 5 ft	<b>Soil Depth:</b> 5 ft	<b>Core Depth:</b> 0 ft
<b>Date Completed:</b> 9/19/2019		
<b>Bore Hole Diameter (in):</b> 6	<b>Sampler Configuration:</b>	<b>Liner Required:</b> Y (N)
<b>Liner Used:</b> Y (N)	<b>Drill Machine:</b> Manual Auger	<b>Drill Method:</b> N/A
<b>Hammer Type:</b>	<b>Energy Ratio:</b> N/A%	
<b>Core Size:</b> N/A	<b>Driller:</b> M. Touchberry	<b>Groundwater:</b> TOB NR
<b>24HR:</b> NR		



## LEGEND

SAMPLER TYPE		DRILLING METHOD	
SS - Split Spoon	NQ - Rock Core, 1-7/8"	HSA - Hollow Stem Auger	RW - Rotary Wash
UD - Undisturbed Sample	CU - Cuttings	CFA - Continuous Flight Augers	RC - Rock Core
AWG - Rock Core, 1-1/8"	CT - Continuous Tube	DC - Driving Casing	

# SCDOT Soil Test Log

<b>Project ID:</b> P037127	<b>County:</b> Dorchester	<b>Boring No.:</b> BS-4
<b>Site Description:</b> US 15 Bridge Replacement over Indian Field Swamp		<b>Route:</b> US 15
<b>Eng./Geo.:</b> M. Touchberry	<b>Boring Location:</b> 101+98	<b>Offset:</b> 13'-RT
<b>Alignment:</b> Existing CL	<b>Date Started:</b> 9/19/2019	
<b>Elev.:</b> 81.6 ft	<b>Latitude:</b> 33.228777	<b>Longitude:</b> -80.540191
<b>Total Depth:</b> 5 ft	<b>Soil Depth:</b> 5 ft	<b>Core Depth:</b> 0 ft
<b>Date Completed:</b> 9/19/2019		
<b>Bore Hole Diameter (in):</b> 6	<b>Sampler Configuration:</b>	<b>Liner Required:</b> Y (N)
<b>Liner Used:</b> Y (N)	<b>Drill Machine:</b> Manual Auger	<b>Drill Method:</b> N/A
<b>Hammer Type:</b>	<b>Energy Ratio:</b> N/A%	
<b>Core Size:</b> N/A	<b>Driller:</b> M. Touchberry	<b>Groundwater:</b> TOB NR
<b>24HR:</b> NR		

Elevation (ft)	Depth (ft)	MATERIAL DESCRIPTION	Graphic Log	Sample Depth (ft)	Sample No./Type	SPT N Value				FINES CONTENT (%)		
						1st 6"	2nd 6"	3rd 6"	4th 6"	PL	MC	LL
81.6	0.0	Asphalt		0.0								
76.6	5.0	<b>FILL</b> Moist, Light Brown, Non-Plastic, Silty Fine to Medium SAND (SM/A-2-4), Munsell: 10YR 6/4 => LL=NP, PL=NP, PI=NP, NMC=5.5, %200=25.4		0.0	DS-1							
71.6		Bulk Sampling Terminated at 5 ft.										
66.6												

### LEGEND

<b>SAMPLER TYPE</b>	<b>DRILLING METHOD</b>
SS - Split Spoon	HSA - Hollow Stem Auger
UD - Undisturbed Sample	RW - Rotary Wash
AWG - Rock Core, 1-1/8"	CFA - Continuous Flight Augers
NQ - Rock Core, 1-7/8"	RC - Rock Core
CU - Cuttings	DC - Driving Casing
CT - Continuous Tube	





**US 15 Bridge Replacement over Indian Field Swamp**  
 (Dorchester County, South Carolina)  
 Project Number : P037127

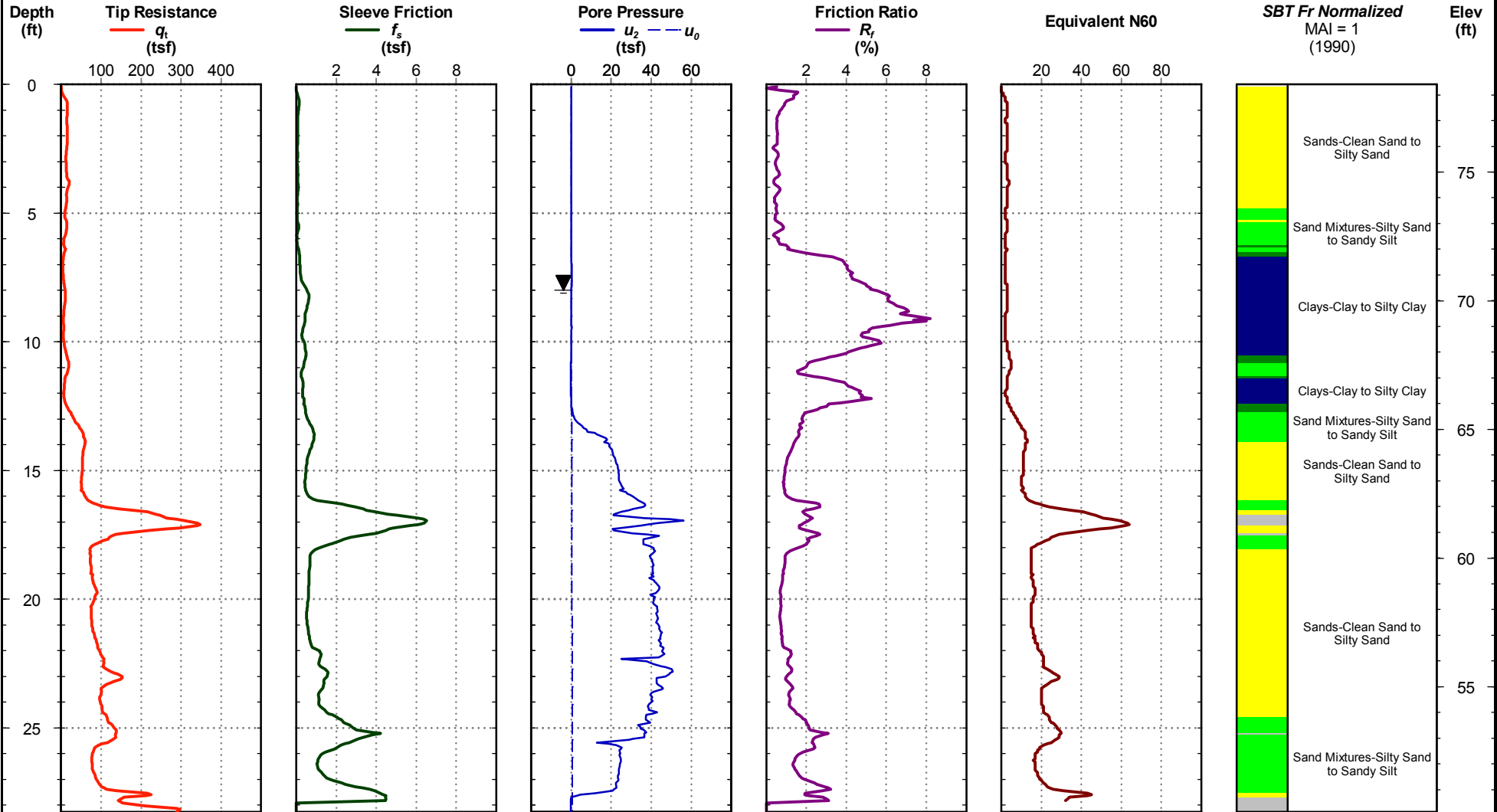
# Cone Penetration Test

## CPT-1

**Date:** Sep. 19, 2019  
**Estimated Water Depth:** 8 ft  
**Rig/Operator:** CME 45-B/L. Guempel

**Station:** 90+57  
**Offset:** 13'-LT  
**Elevation:** 78.4

**Total Depth:** 28.3 ft  
**Termination Criteria:** Maximum Reaction Force  
**Cone Size:**



CPT REPORT - STANDARD G6100.120 - US-15 RBO INDIAN FIELD SWAMP.GPJ FME2017.GDT 10/31/19

## CPT-1



**US 15 Bridge Replacement over Indian Field Swamp**  
 (Dorchester County, South Carolina)  
 Project Number : P037127

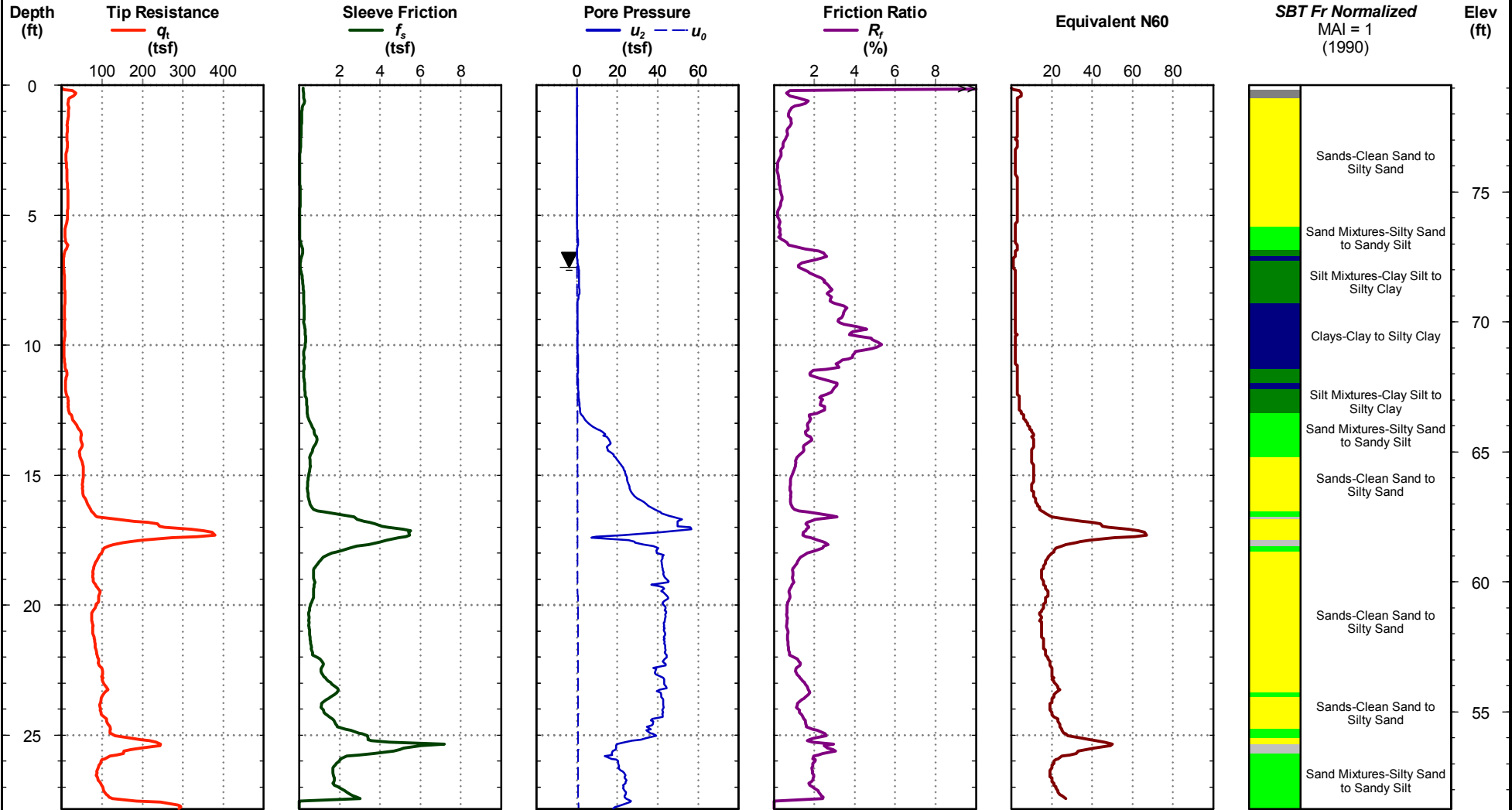
# Cone Penetration Test

## CPT-2

**Date:** Sep. 19, 2019  
**Estimated Water Depth:** 7 ft  
**Rig/Operator:** CME 45-B/L. Guempel

**Station:** 91+29  
**Offset:** 13'-RT  
**Elevation:** 79.1

**Total Depth:** 27.8 ft  
**Termination Criteria:** Maximum Reaction Force  
**Cone Size:**



CPT REPORT - STANDARD G6100.120 - US-15 RBO INDIAN FIELD SWAMP.GPJ FME2017.GDT 10/31/19

## CPT-2



**US 15 Bridge Replacement over Indian Field Swamp**  
 (Dorchester County, South Carolina)  
 Project Number : P037127

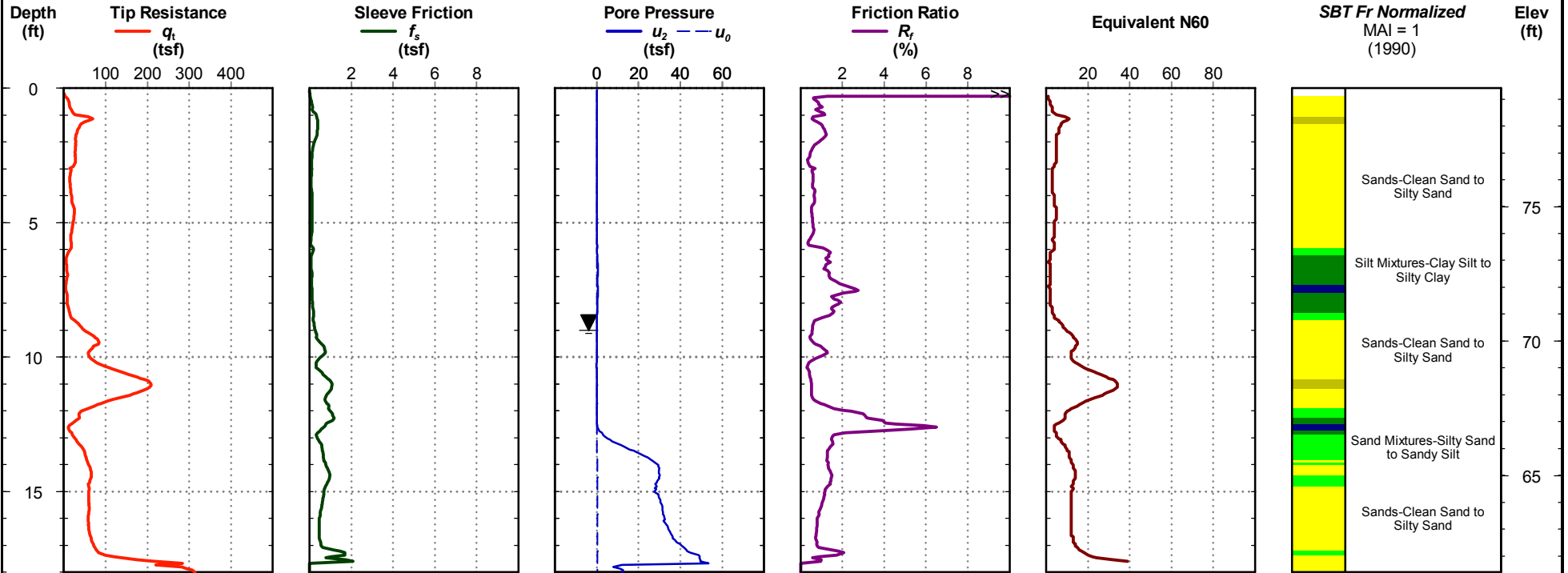
# Cone Penetration Test

## CPT-3

**Date:** Sep. 19, 2019  
**Estimated Water Depth:** 9 ft  
**Rig/Operator:** CME 45-B/L. Guempel

**Station:** 97+94  
**Offset:** 12'-LT  
**Elevation:** 79.4

**Total Depth:** 18.0 ft  
**Termination Criteria:** Maximum Reaction Force  
**Cone Size:**



CPT REPORT - STANDARD\_G6100.120 - US-15 RBO INDIAN FIELD SWAMP.GPJ\_FME2017.GDT\_10/31/19

## CPT-3



US 15 Bridge Replacement over Indian Field Swamp  
 (Dorchester County, South Carolina)  
 Project Number : P037127

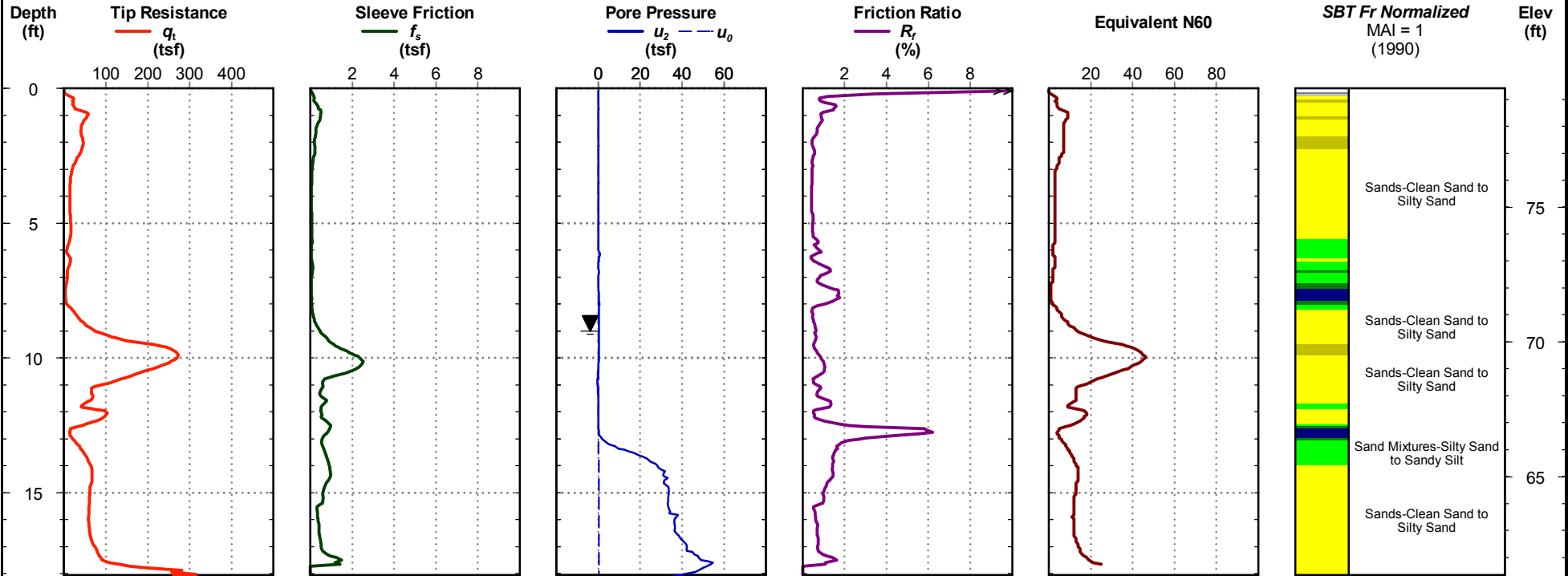
# Cone Penetration Test

## CPT-3A

Date: Sep. 19, 2019  
 Estimated Water Depth: 9 ft  
 Rig/Operator: CME 45-B/L. Guempel

Station: 97+79  
 Offset: 12'-LT  
 Elevation: 79.4

Total Depth: 18.1 ft  
 Termination Criteria: Maximum Reaction Force  
 Cone Size:



CPT REPORT - STANDARD\_G6100.120 - US-15 RBO INDIAN FIELD SWAMP.GPJ\_FME2017.GDT\_10/31/19

## CPT-3A



**US 15 Bridge Replacement over Indian Field Swamp**  
 (Dorchester County, South Carolina)  
 Project Number : P037127

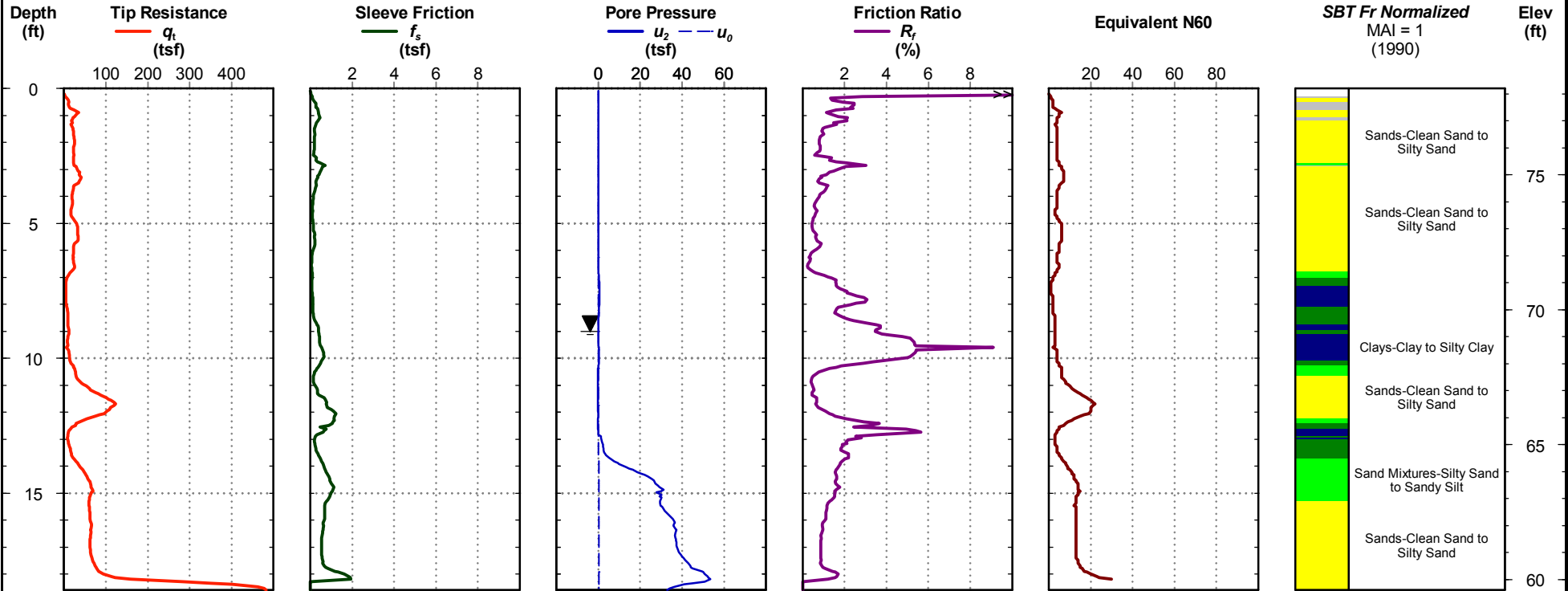
# Cone Penetration Test

# CPT-4

**Date:** Sep. 19, 2019  
**Estimated Water Depth:** 9 ft  
**Rig/Operator:** CME 45-B/L. Guempel

**Station:** 98+92  
**Offset:** 14'-RT  
**Elevation:** 78.2

**Total Depth:** 18.6 ft  
**Termination Criteria:** Maximum Reaction Force  
**Cone Size:**



CPT REPORT - STANDARD\_G6100.120 - US-15 RBO INDIAN FIELD SWAMP.GPJ\_FME2017.GDT\_10/31/19

# CPT-4

